

HANOVER FIRE PROTECTION DISTRICT
March 12, 2024

This meeting is being recorded to assist in the production of meeting minutes.

1. CHANGES TO AGENDA/POSTPONEMENTS
2. PUBLIC COMMENT:
3. APPROVAL OF THE MINUTES FROM FEB
4. REGULAR BUSINESS:
 - a. Treasurer's Report for Feb
 - b. Chief's Report
5. OLD BUSINESS:
 - a. Deployment outstanding billables and receivables
 - b. Hail Damages repairs update.
 - c. Hanover Fire 50th year anniversary
 - d. 2024 Audit
 - e. 2023 Audits
 - f. Old 3513 Engine
 - g. Generator Back up Station 2
6. NEW BUSINESS:
 - a. Captain Job Description
 - b. HB24-1168 Equal Access to Public Meeting
 - c. HB24-1104 Prohibiting Firefighters personal information from publication on the internet by public entities
 - d. HB24-1302 Tax rate information to real property owners
 - e. HB24-144 Real Property valuation
 - f. Grants (Safer Grant opened on 11-March-12 April 2024).
 - g. Interagency Junior Firefighter Program
7. OTHER BUSINESS:
8. FUTURE AGENDA ITEMS:
9. BOARD COMMENTS
10. ADJOURNMENT

Hanover Fire Protection District

Profit and Loss

February 2024

	TOTAL
Income	
Earned Revenues	67,582.79
Total Income	\$67,582.79
GROSS PROFIT	\$67,582.79
Expenses	
Adminstrative Expense	
Office Supplies and Materials	226.00
Professional Services fees	
Accounting	250.00
Total Professional Services fees	250.00
Recruitment Retention	161.32
Total Adminstrative Expense	637.32
Benefits	
Health Insurance	1,258.38
Volunteer Stipen Pay	4,085.73
Total Benefits	5,344.11
Communications	
Cellular Support	4,140.00
County Paging Net/ 911	660.00
Regional Radio Network Support	9,003.86
Web Page	6.00
Total Communications	13,809.86
Maintenance	
Stations Maintenance	1,515.00
Vehicle Maintenance	20.89
Total Maintenance	1,535.89
Operation	
Fuel and oil	2,678.63
Telephone	485.16
Utilities	1,330.82
Total Operation	4,494.61
Other Miscellaneous Expenses	
Volunteer FF Deployment	621.00
Total Other Miscellaneous Expenses	621.00
Payroll Expenses	
Taxes	4,639.16
Wage	24,888.34
Total Payroll Expenses	29,527.50

Hanover Fire Protection District

Profit and Loss

February 2024

	TOTAL
Training	
Training - Chief	150.00
Training - Fire	1,003.86
Total Training	1,153.86
Total Expenses	\$57,124.15
NET OPERATING INCOME	\$10,458.64
Other Income	
Interest Income	21.04
Total Other Income	\$21.04
NET OTHER INCOME	\$21.04
NET INCOME	\$10,479.68

Hanover Fire Protection District

Profit and Loss

January - February, 2024

	TOTAL
Income	
Earned Revenues	102,892.04
Total Income	\$102,892.04
GROSS PROFIT	\$102,892.04
Expenses	
Adminstrative Expense	
Incentives +Achievement	952.51
Office Supplies and Materials	1,390.23
Professional Services fees	
Accounting	500.00
Total Professional Services fees	500.00
Recruitment Retention	161.32
Total Adminstrative Expense	3,004.06
Benefits	
Health Insurance	2,516.76
Insurance - Workmans Comp	9,285.00
Volunteer Stipen Pay	4,855.02
Total Benefits	16,656.78
Communications	
Cellular Support	4,140.00
County Paging Net/ 911	660.00
Regional Radio Network Support	9,068.65
Web Page	6.00
Total Communications	13,874.65
Dues and Subscriptions Expense	847.25
Ems Training	62.50
Maintenance	
Medical Equipment	9,180.00
Stations Maintenance	3,118.84
Vehicle Maintenance	1,826.86
Total Maintenance	14,125.70
Operation	
Fuel and oil	2,678.63
Medical Supplies Expendables	3,123.03
Telephone	965.16
Utilities	1,864.15
Total Operation	8,630.97
Other Miscellaneous Expenses	
Volunteer FF Deployment	1,325.61
Total Other Miscellaneous Expenses	1,325.61

Hanover Fire Protection District

Profit and Loss

January - February, 2024

	TOTAL
Payroll Expenses	
Taxes	6,377.25
Wage	34,212.72
Total Payroll Expenses	40,589.97
Training	
Training - Chief	150.00
Training - Fire	1,518.09
Total Training	1,668.09
Total Expenses	\$100,785.58
NET OPERATING INCOME	\$2,106.46
Other Income	
Interest Income	46.66
Total Other Income	\$46.66
NET OTHER INCOME	\$46.66
NET INCOME	\$2,153.12

Hanover Fire Protection District

Balance Sheet As of February 29, 2024

	TOTAL
ASSETS	
Current Assets	
Bank Accounts	
Colorado Trust	4,198.61
UMB Checking-0624	77,838.21
UMB Money Mkt-5659	227,586.97
UMB MonMkt2-4912	64,729.70
Total Bank Accounts	\$374,353.49
Accounts Receivable	
Accounts Receivable	0.00
Total Accounts Receivable	\$0.00
Other Current Assets	
Generator	7,140.00
Payroll Corrections	0.00
Prepaid Insurance	0.00
Prepaid Repairs Stations 1&2	122,926.88
Prepaid-Fuel and oil	2,251.36
Undeposited Funds	0.00
Vol Disability Insurance	0.00
Total Other Current Assets	\$132,318.24
Total Current Assets	\$506,671.73
Fixed Assets	
Accumulate Depreciation	-998,343.33
Building improvements	11,293.60
Capital - Fence	3,817.00
Capital - Fixed Support Equip	72,149.38
Capital Lease-3511 Fire Truck	26,000.00
Fire Station - Improvements	55,405.70
Station 1	1,650.00
Station 2 - cost	223,801.81
Station 2 Expansion	422,526.14
Station 2 Office	0.00
Station 3	131,297.38
Station 3 Gas install	0.00
Total Fire Station - Improvements	834,681.03
Fixed Asset Software	30,615.26

Hanover Fire Protection District

Balance Sheet

As of February 29, 2024

	TOTAL
Furniture & Equipment	15,802.02
2 New Radios	6,765.44
2007 Dodge Durango Console	1,577.99
2007 Light	13,602.10
3/4 HP Brown Pump - Well Pump	0.00
AEDs	2,530.34
Bunk Gear 7 Sets	0.00
Bunker Gear Sets	65,389.31
Cascade System	29,729.49
Computer- Mobile	8,092.88
Equipment 1	0.00
Equipment 2	0.00
Extractor	8,585.48
Extrication Equipment	33,182.00
Fire Hose	34,030.00
Laptop computer sets	4,415.85
Mechanical CPR Unit	11,814.50
Med Stair chairs	6,105.60
Metal Bldg 2011	0.00
Minitor II Pagers	0.00
Mob Radio	3,147.36
Network Page Net Convert	0.00
New Door	0.00
Office Equipment	17,019.83
PPR Comm Norwest	18,534.00
Radio (1) 2020	10,630.79
Radio 3570	0.00
Radio Motorlas	46,353.18
Radio/Pagers (2)	16,108.65
SCBAs (8)	71,839.28
TVs 2020	7,710.45
Units	1,439.88
Wildland Firefighting gear	80,429.01
Wildland Pump	5,335.00
Total Furniture & Equipment	520,170.43
Radio/Pager 2020	16,928.90
Shelters2020	4,483.70
Streamlight Fire Vulcan System	539.81
Surveillance Equipment 2020	7,119.97

Hanover Fire Protection District

Balance Sheet

As of February 29, 2024

	TOTAL
Vehicles & Trucks	536,848.35
1989 Pierce Arrow Engine	17,000.00
1992 Chev Ambulance	2,000.00
1997 Pierce Engine	27,000.00
2 Fire Brush Truck	-35,000.00
2000 Ford Ambulance	29,000.00
2003 Ford 250 & 2007 Dodge Dura	4,320.00
2008 Brush Truck 3	283,551.89
2008 Tanker	0.00
2009 Suburban	14,746.20
2013 Chevy Tahoe	-19,170.00
2021 Chevy Silverado	57,098.44
2022 Chevy Ex Cab	85,718.90
Ambulance 2015 Chev	121,950.00
Chief Truck	31,496.56
Dep Chief Vehicle	16,731.41
Engine 3511(1999)	120,055.16
Equipment	20,468.32
Vehicle-Hose Roller	9,240.00
Total Equipment	29,708.32
Fast Attack-2 2021	33,823.90
Fire Truck	600.00
Fire Truck 1986 F800	0.00
Fire Truck 2001 3521	61,451.31
Fire Truck 2005 3522	87,292.99
Fire Truck 2021 5500 Chevy	24,964.63
Fire Truck A7 (3512)	22,500.00
Ford Expedition 2012	4,000.00
Snow Mobile Trailer	6,912.77
Support Trailer	58,973.67
Truck	0.00
Total Vehicles & Trucks	1,623,574.50
Total Fixed Assets	\$2,153,030.25
Other Assets	
Pension Fund	411,283.43
Prepaid Utilities	14,638.20
Total Other Assets	\$425,921.63
TOTAL ASSETS	\$3,085,623.61

Hanover Fire Protection District

Balance Sheet

As of February 29, 2024

	TOTAL
LIABILITIES AND EQUITY	
Liabilities	
Current Liabilities	
Accounts Payable	
Accounts Payable	0.00
Total Accounts Payable	\$0.00
Credit Cards	
Capital One Credit Card	17,503.00
Visa-UMB-9581	0.00
Total Credit Cards	\$17,503.00
Other Current Liabilities	
Colorado Department of Revenue Payable	-629.00
Direct Deposit Liabilities	0.00
Direct Deposit Payable	0.00
Notes Payable	0.00
Payroll Liabilities	6,427.22
941- Social & Medicare	-0.99
Archuleta Child Support	-34.27
CO Income Tax	-1,998.00
CO Paid Family and Medical Leave	153.96
CO Unemployment Tax	3,830.49
Federal Taxes (941/944)	5.88
Federal Unemployment (940)	79.28
Federal Withholding	0.00
FUTA- Federal Unemployment	0.00
State Wage Withholding	0.00
SUTA- State Unemployment	-322.53
Vestw Contributionell Integration State IRA	2,876.99
Total Payroll Liabilities	11,018.03
Total Other Current Liabilities	\$10,389.03
Total Current Liabilities	\$27,892.03
Long-Term Liabilities	
Lease Purchase Payable	-80,854.26
Loan to Sate Bank-3511 Fire Tru	26,000.00
Total Long-Term Liabilities	\$ -54,854.26
Total Liabilities	\$ -26,962.23
Equity	
Opening Balance Equity	840,943.83
Retained Earnings	2,269,488.89

Hanover Fire Protection District

Balance Sheet

As of February 29, 2024

	TOTAL
Net Income	2,153.12
Total Equity	\$3,112,585.84
TOTAL LIABILITIES AND EQUITY	\$3,085,623.61



Studies in the Upper Black Squirrel Creek Designated Ground Water Basin, Colorado

Zachary Kisfalusi, Jackson Sharp, Erin Hennessy,
Lauren Eng, & Andy Klakulak

U.S. Department of the Interior
U.S. Geological Survey

This information is preliminary and is subject to revision. It is being provided to meet the need for timely best science. The information is provided on the condition that neither the U.S. Geological Survey nor the U.S. Government shall be held liable for any damages resulting from the authorized or unauthorized use of the information.

USGS Project Website Links

Water-level Monitoring Network

<https://www.usgs.gov/centers/colorado-water-science-center/science/upper-black-squirrel-creek-water-level-monitoring#overview>

Long-term Groundwater Quality Study

<https://www.usgs.gov/centers/colorado-water-science-center/science/upper-black-squirrel-creek-long-term-groundwater#overview>

Data Available at USGS Water Data for the Nation

<https://doi.org/10.5066/F7P55KJN>.



Preliminary Information-Subject to Revision. Not for Citation or Distribution.

Presentation Outline

1. Water level Monitoring Network

- Research Questions
- Data Collection
- USGS Terminology
- Potentiometric-surface Maps: April 2023
- Monotonic Groundwater-level Elevation Trends
- Hydrograph Examples
- Preliminarily Findings
- Potential Next Steps

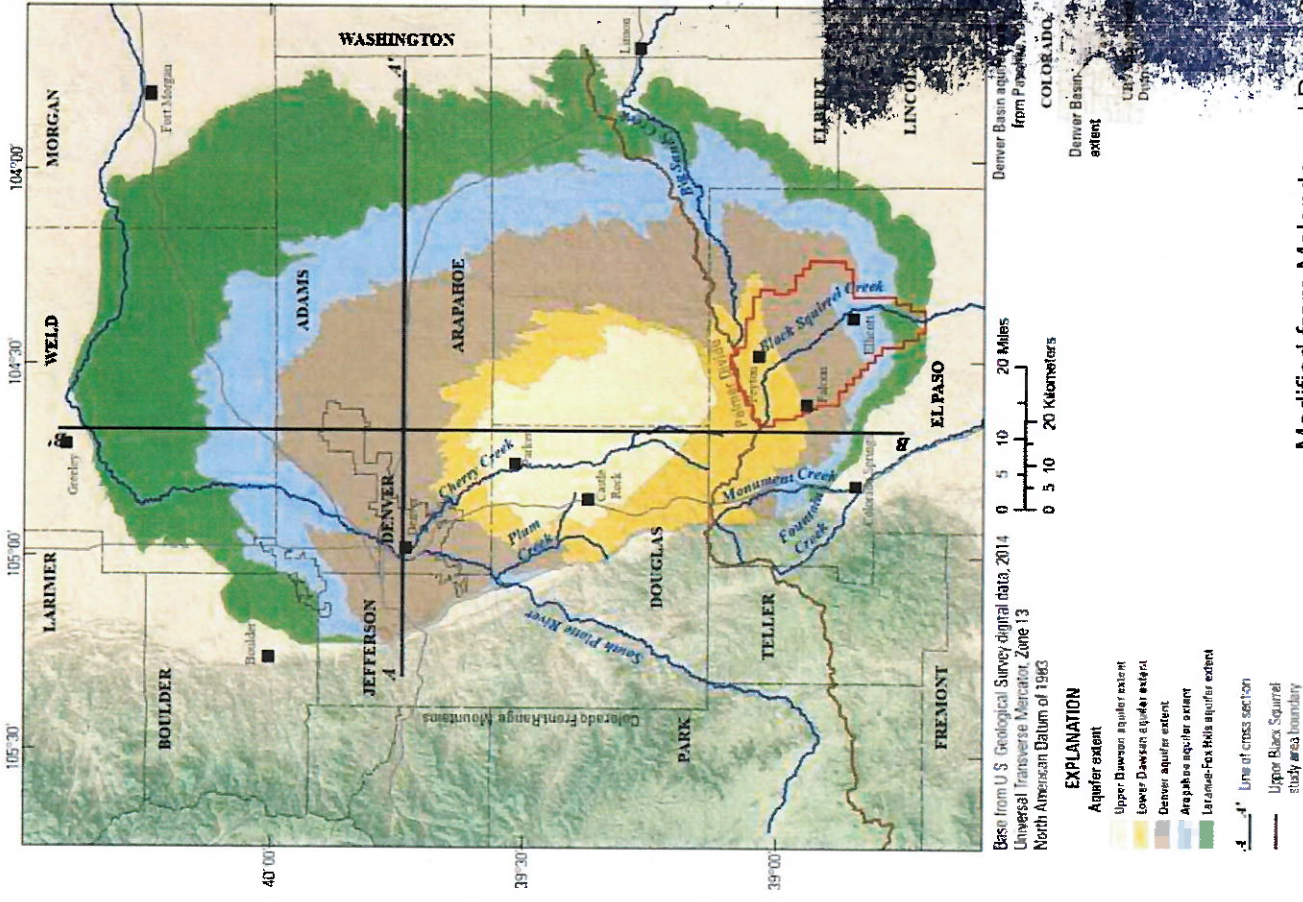
Long-term Groundwater Quality Study

- Multiphase Water-quality Study
- Phase IV Research Questions
- Phase IV Data Collection
- Phase IV Maximum Nitrate Concentrations
- Nitrate Comparison: 2013 vs 2021-2022
- Potential Sources and Processes Affecting Nitrate
- Pesticide Compounds
- Pharmaceutical Compounds and Personal-Care Products
- Rare-Earth Elements
- PFAS Compounds
- Preliminary Takeaways...so far
- Potential Additional Data Analysis

Preliminary Information-Subject to Revision. Not for Citation or Distribution.

Research Questions

- What is background water level data for the various Denver Basin aquifers ?
- How are the water levels changing from 2021 to 2024?
- What trends were found during the study period?



USGS Terminology

- Discrete vs Time Series
 - Single measurement taken with an electric tape 6 times a year vs hourly data collected from a pressure transducer hanging in the well.



Photograph by USGS,
April 2021



Photograph by USGS,
December 2021

USGS Terminology

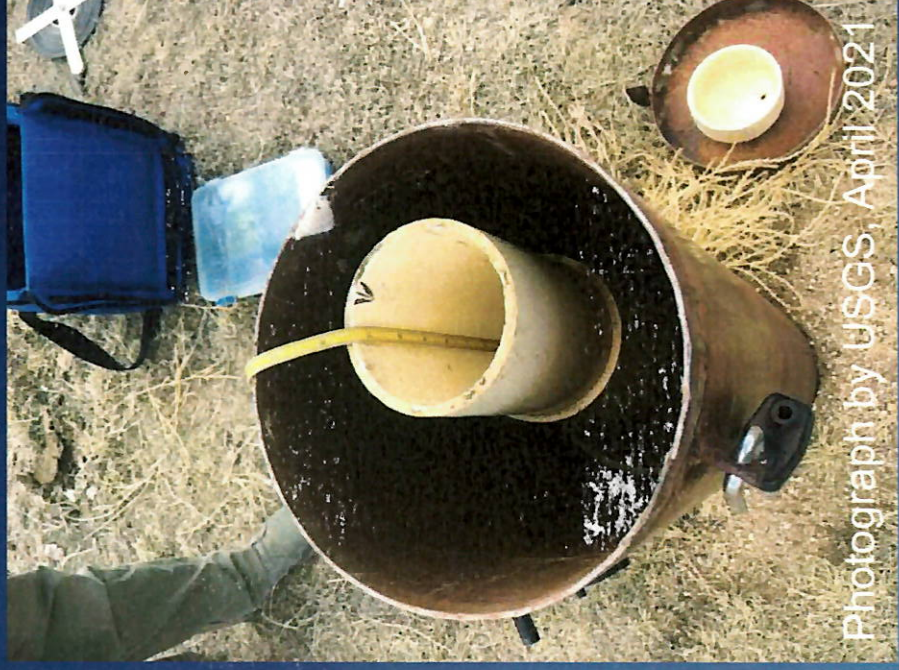
- Static vs Pumping
 - Static: Two consecutive water level measurements taken within 0.02 feet of one another, Cunningham and Schalk (2011)
 - Pumping: Measurements affected by recent or active pumping that draw the water level down in the well thus not truly representing the aquifer condition
 - USGS takes measurements and tracks water level recovery for 30-60 minutes when pumping is observed.
 - Record the highest measurement after 30-60 minutes unless two static measurements have been taken or pumping has resumed while at the location

USGS Terminology

Domestic well



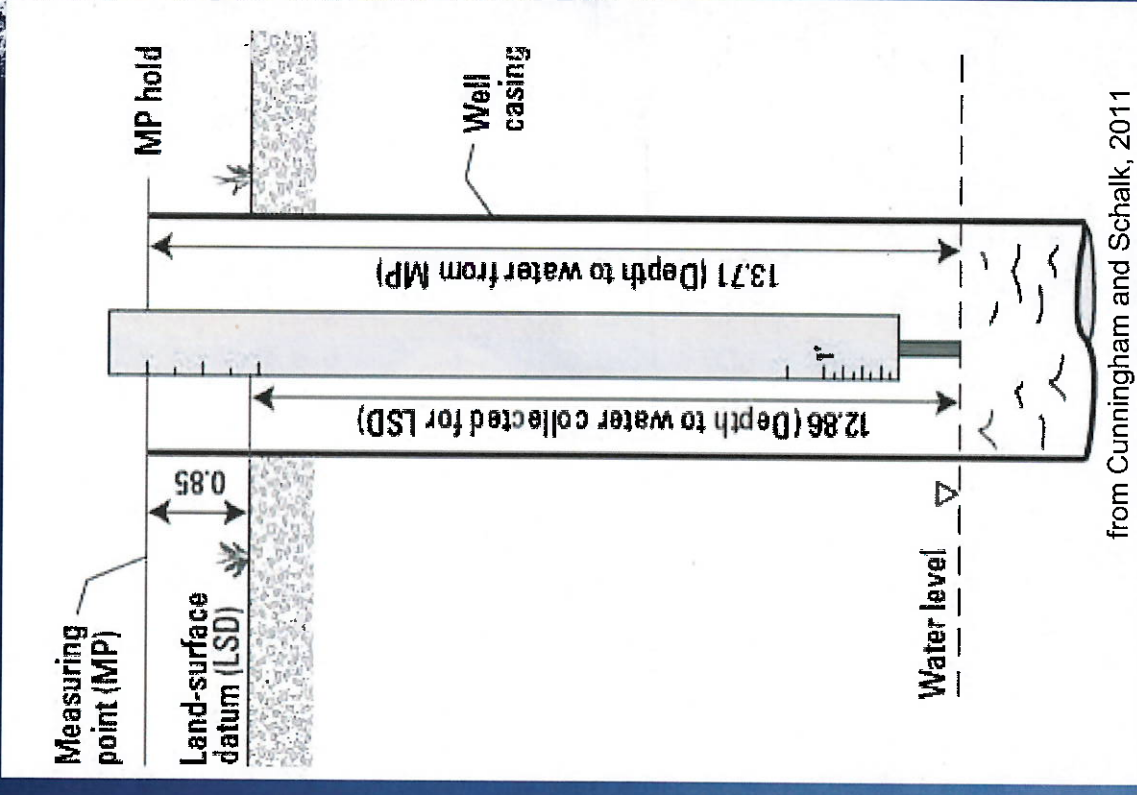
Monitoring well



Preliminary Information-Subject to Revision. Not for
Citation or Distribution.

USGS Terminology

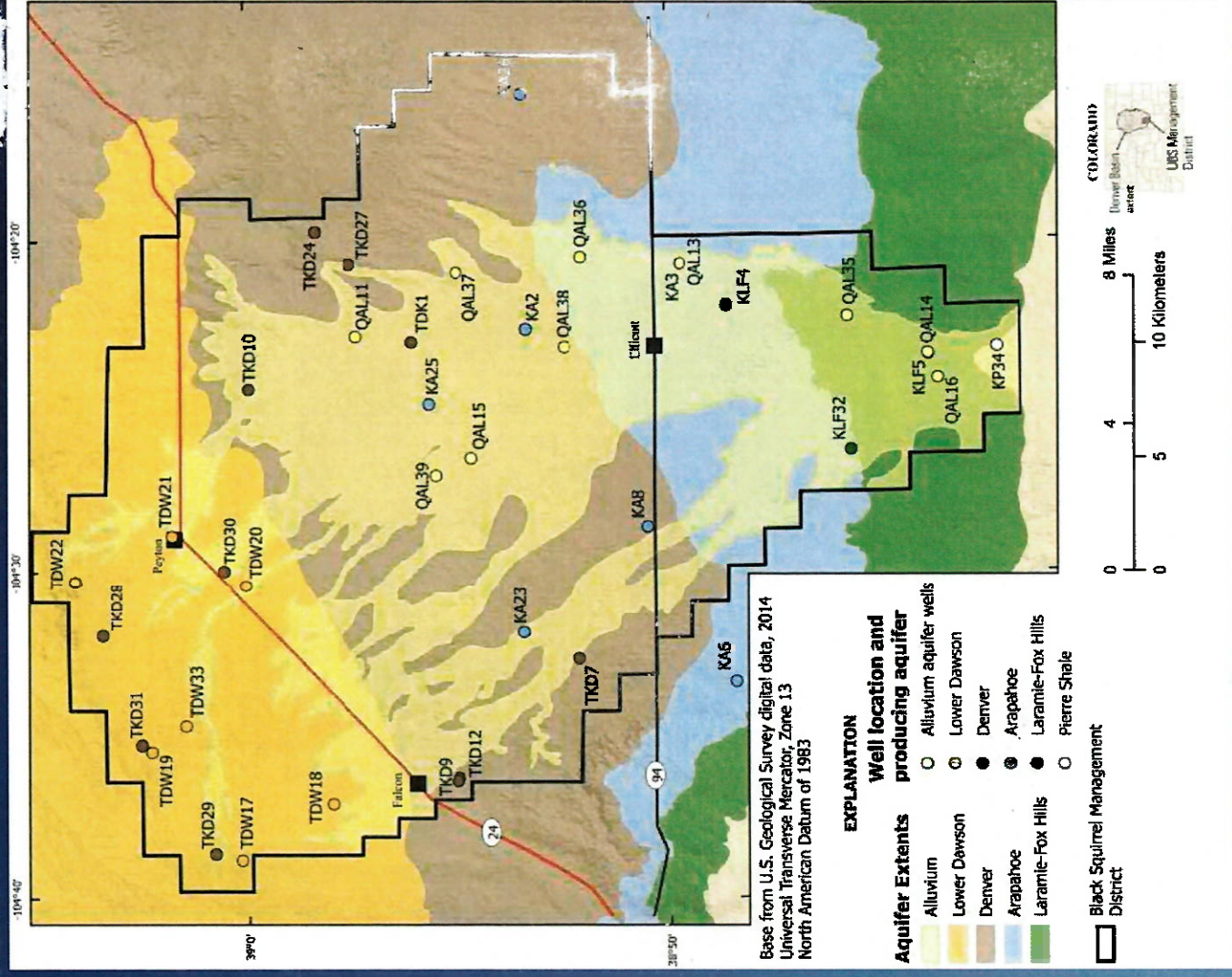
- Water level vs Groundwater-level Elevation
 - Water level below LSD = Water level below MP - height of MP
 - Groundwater-level elevation = LSD - Water level below LSD
 - The elevation is calculated in feet above datum (NAVD88) to best compare data from one location to the next



from Cunningham and Schalk, 2011

Data Collection

- Bi-monthly measurements at 39 wells
 - 1 in Pierre Shale (KP)
 - 3 in Laramie-Fox Hills (KLF)
 - 7 in Arapahoe (KA)
 - 11 in Denver (TKD)
 - 7 in Dawson (TDW)
 - 10 in Alluvium (QAL)
 - Six wells discontinued during study period
- Eight of the 33 current wells have time-series data (continuous hourly monitoring)
 - 1 in Laramie-Fox Hills (KLF)
 - 1 in Arapahoe (KA)
 - 2 in Denver (TKD)
 - 2 in Dawson (TDW)
 - 2 in Alluvium (QAL)

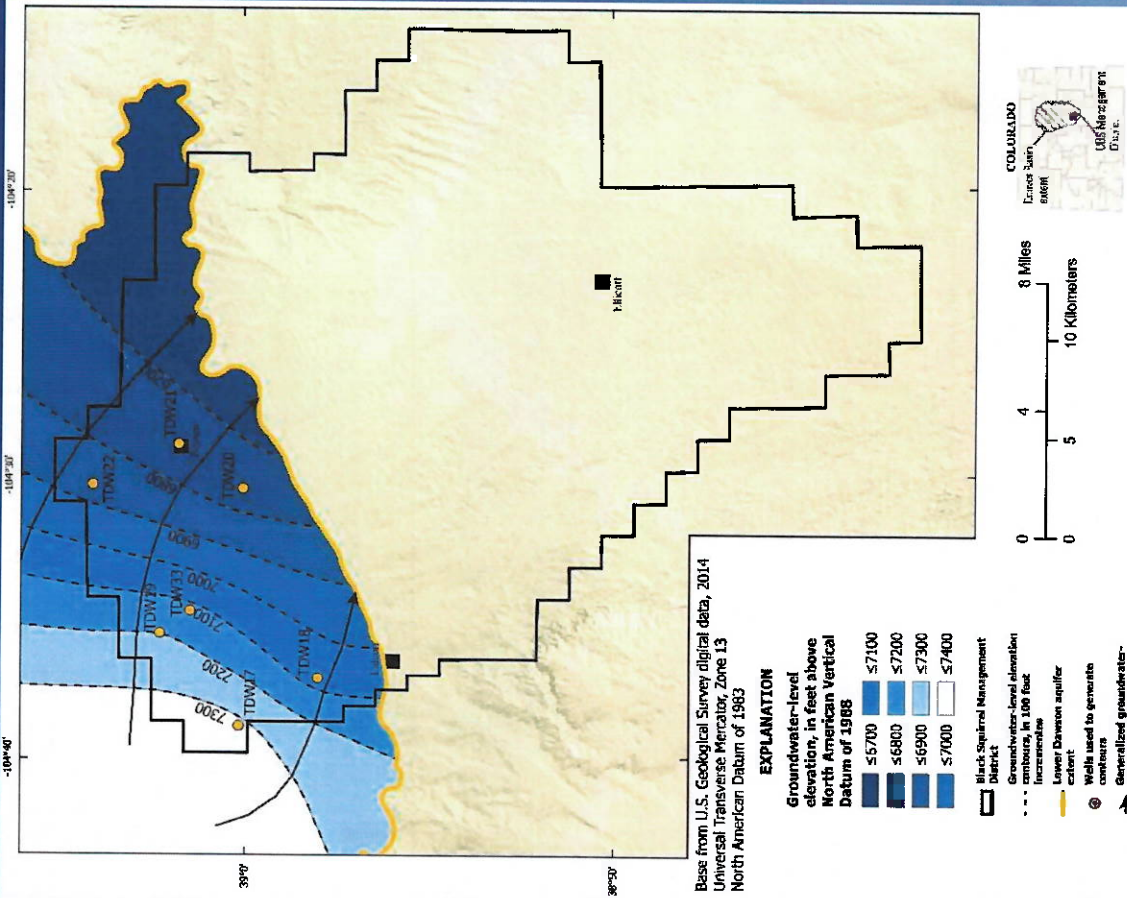


Preliminary Information-Subject to Revision. Not for Citation or Distribution.

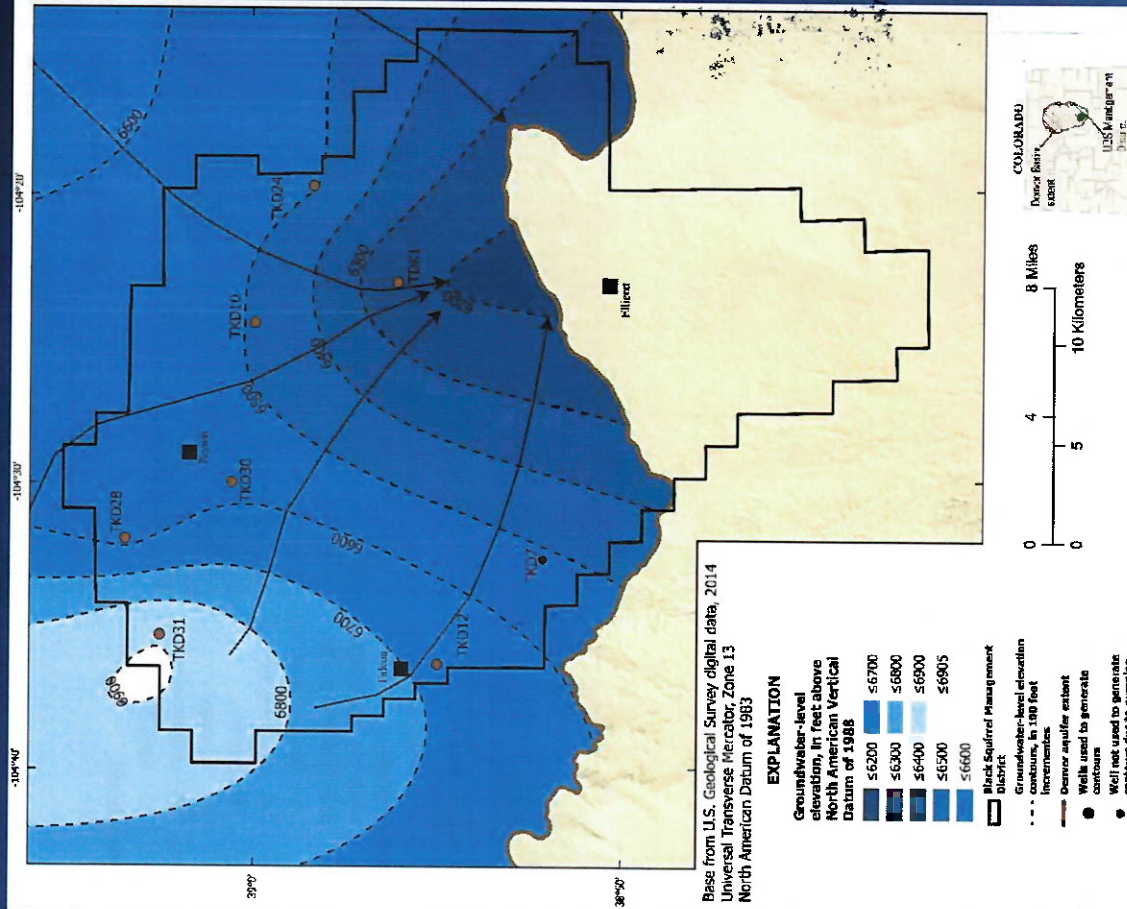


Potentiometric-surface Maps: April 2023

Dawson



Denver



Preliminary Information-Subject to Revision. Not for Citation or Distribution.

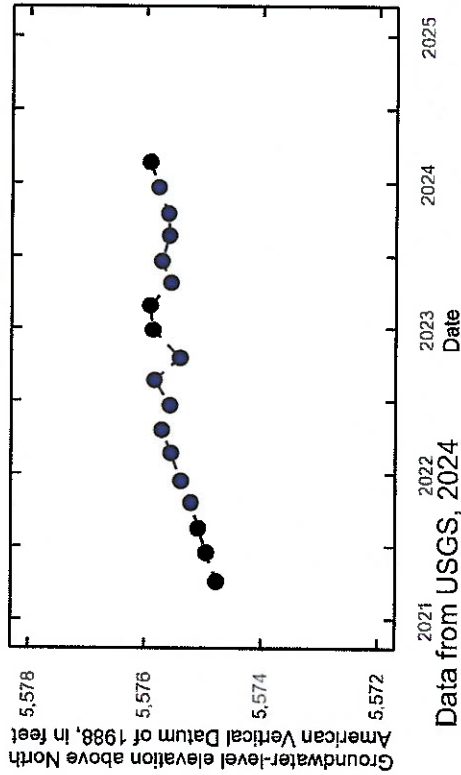


Monotonic Groundwater-level Elevation Trends

- Trends were calculated for entire discrete dataset for each well ($\alpha=0.10$) from 2021 to 2024
 - 12 wells increased
 - 4 wells decreased
- Monthly trends were also calculated at wells with at least 2 years of data
 - 7 wells had a significant monthly trend from 2021 to 2024
 - TDW21, TKD30, KA8, and KP34 increased
 - TDK7, KA2, and KA6 decreased
- Time-series data at 8 of the 9 wells had a significant trend calculated from 2021 to 2024
 - QAL11 does not and is likely due to influence of monsoon rain in June 2023
 - QAL14, TDW21, TDW33, TKD24, and KLF5 increased
 - TKD7, TKD27, and KA6 decreased
- 3 of the time-series wells had a significant monthly trend calculated
 - QAL14 and KLF5 increased
 - KA6 decreased

KP34

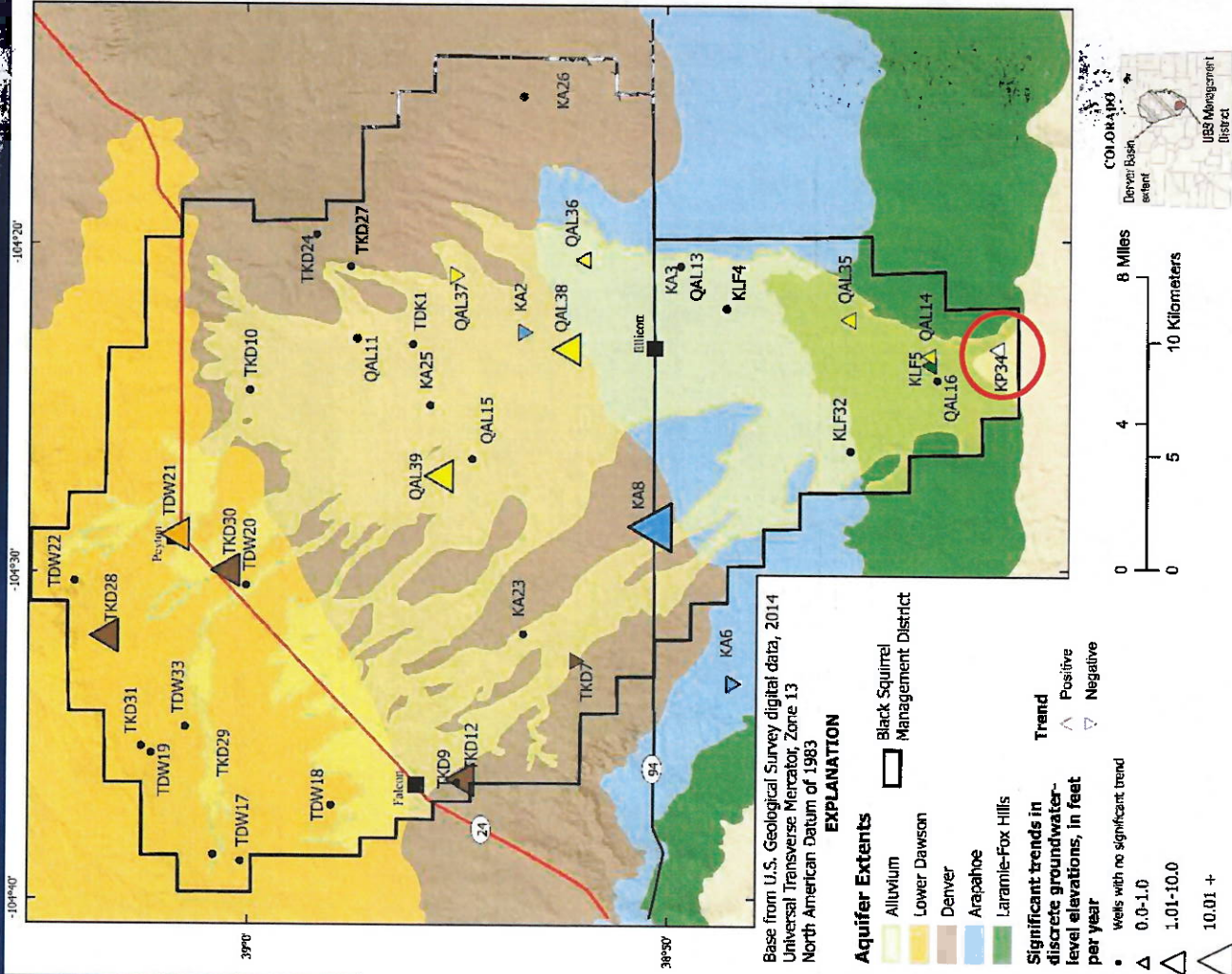
USGS Station Name: SC01506336ADC KP34



Data from USGS, 2024

EXPLANATION
Groundwater-level Status
● Static

Significant positive trend for full period of record from 2021 to 2023 and monthly



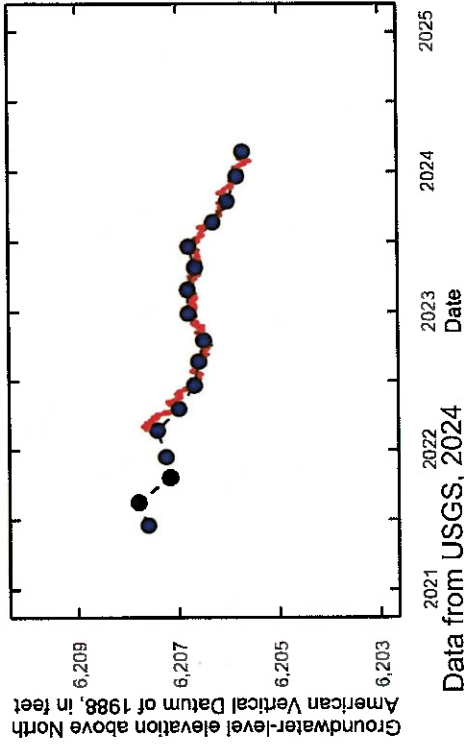
Data from USGS, 2024



Preliminary Information-Subject to Revision. Not for Citation or Distribution.

KA6

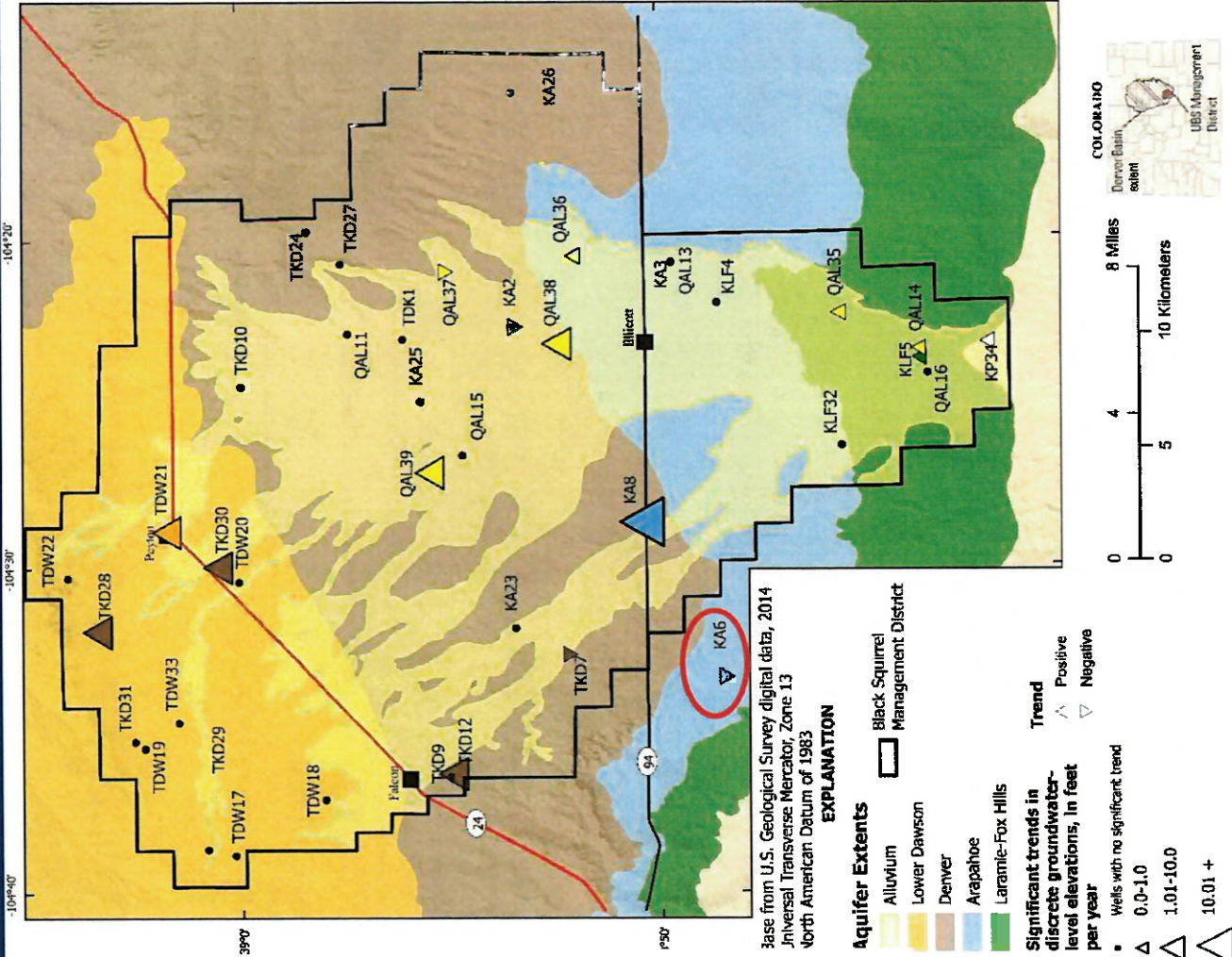
USGS Station Name: SC01406428AAC KA6



Data from USGS, 2024

Significant negative trend for full period of record from 2021 to 2023 and monthly

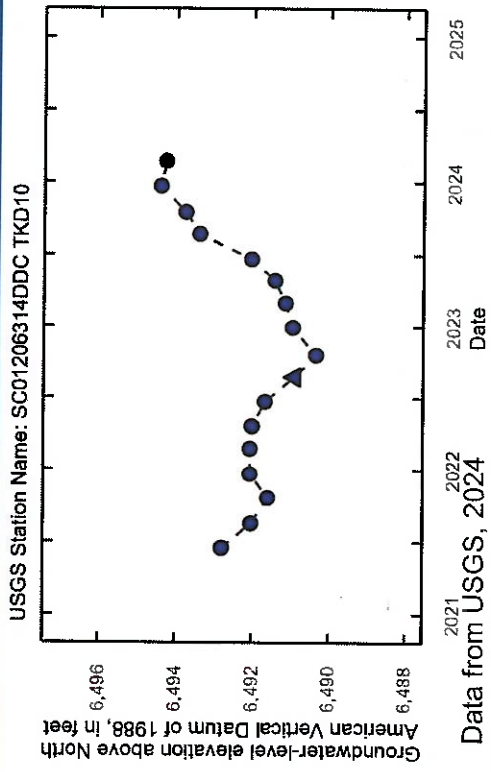
- EXPLANATION**
- Continuous maximum
 - Daily Maximum
 - Groundwater-level Status
 - Static



Data from USGS, 2024



TKD10

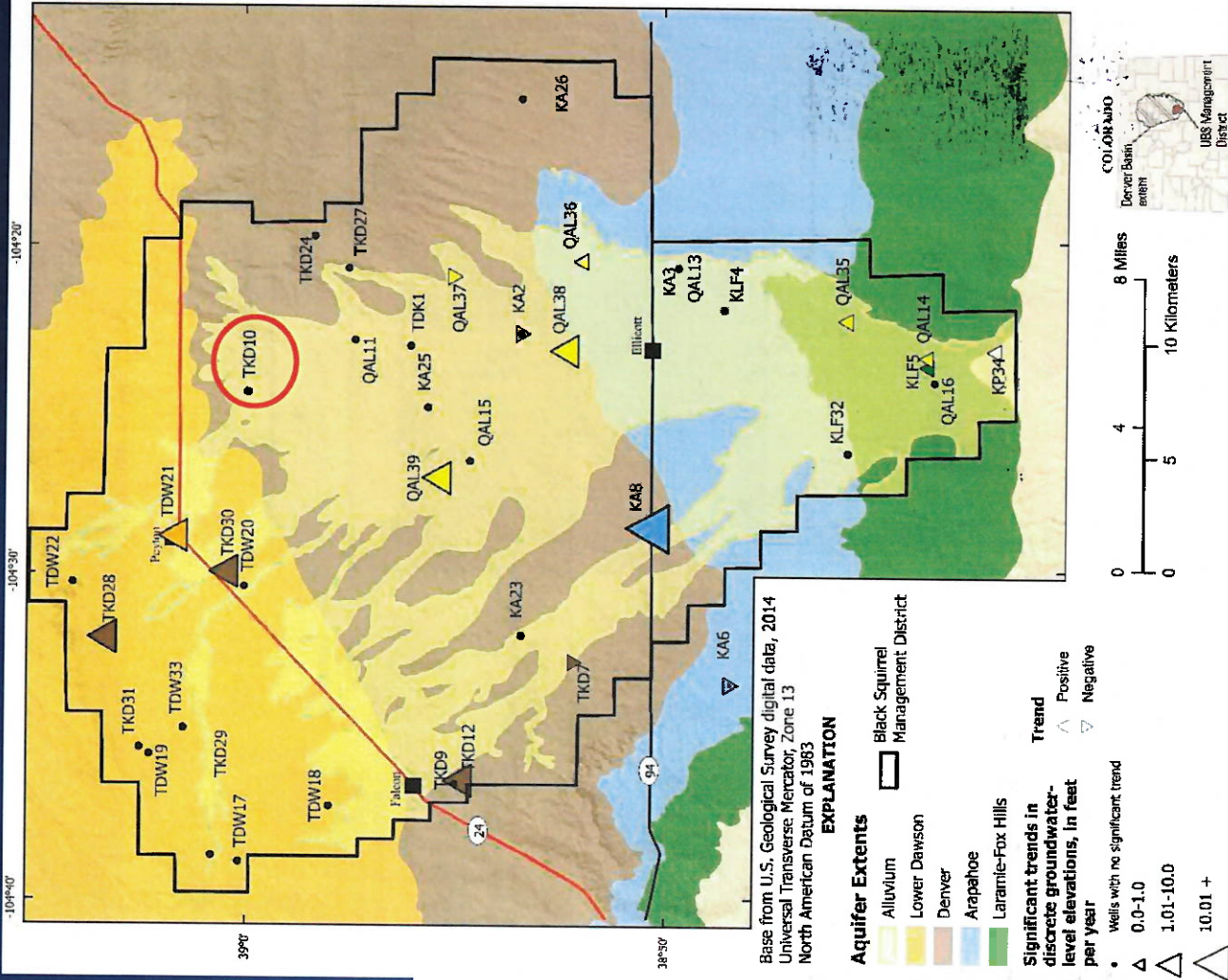


Data from USGS, 2024

No monotonic trend

Decreased from 2021 to October of 2022 before it increased through December 2023

EXPLANATION
Groundwater-level Status
▲ Pumping
● Static



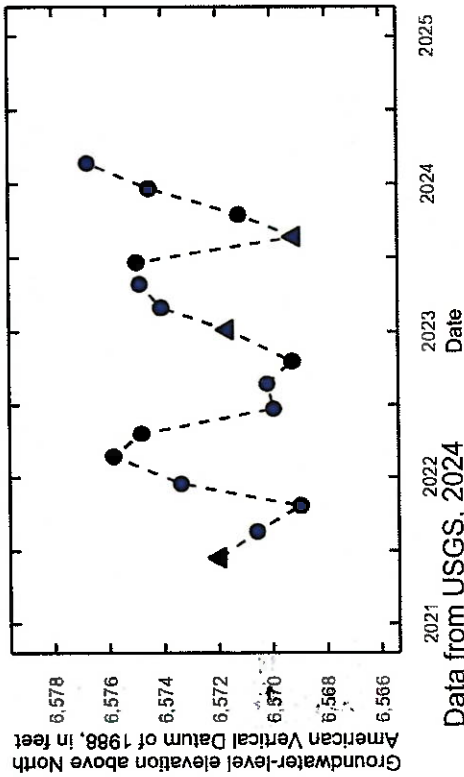
Data from USGS, 2024



Preliminary Information-Subject to Revision. Not for Citation or Distribution.

TKD28

USGS Station Name: SC011064355BD TKD28

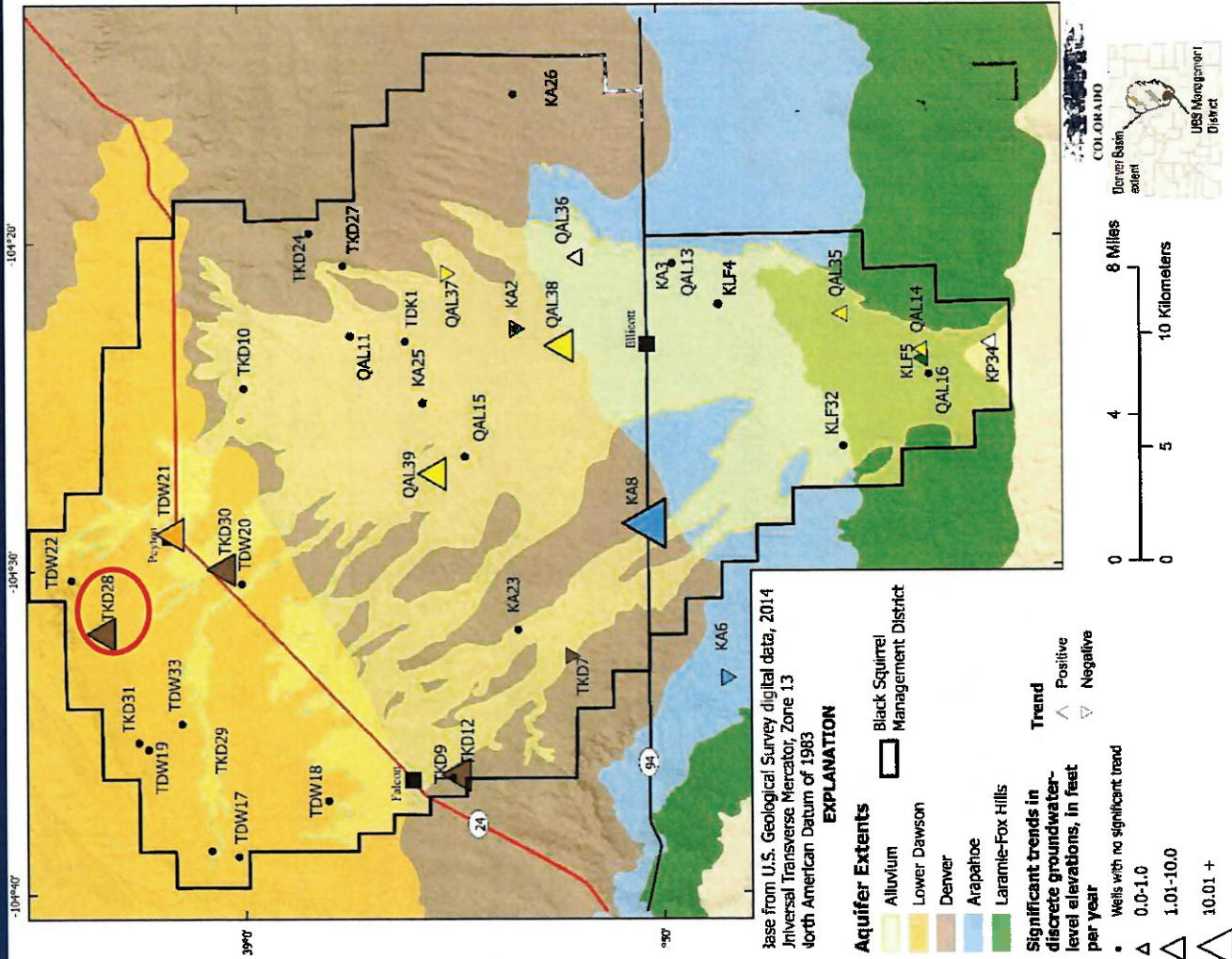


Data from USGS, 2024

EXPLANATION
 Groundwater-level Status
 ▲ Pumping
 ● Static

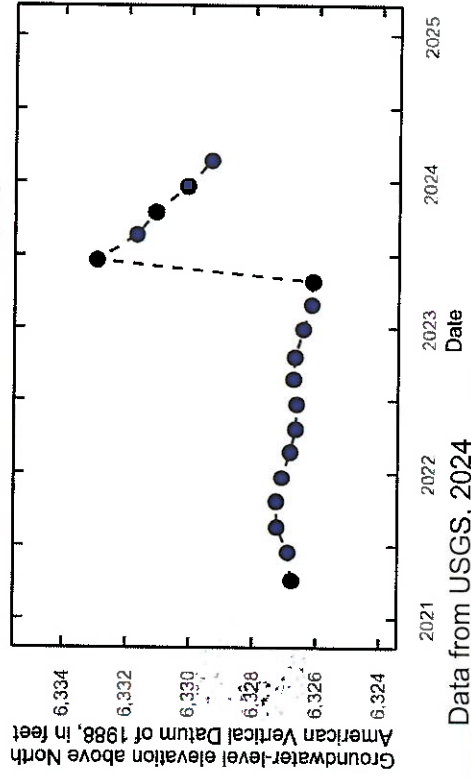
Positive monotonic trend for entire dataset

No monotonic monthly trend with variation on when the peak and trough occur from year to year



QAL15

USGS Station Name: SC01306316DDD QAL15



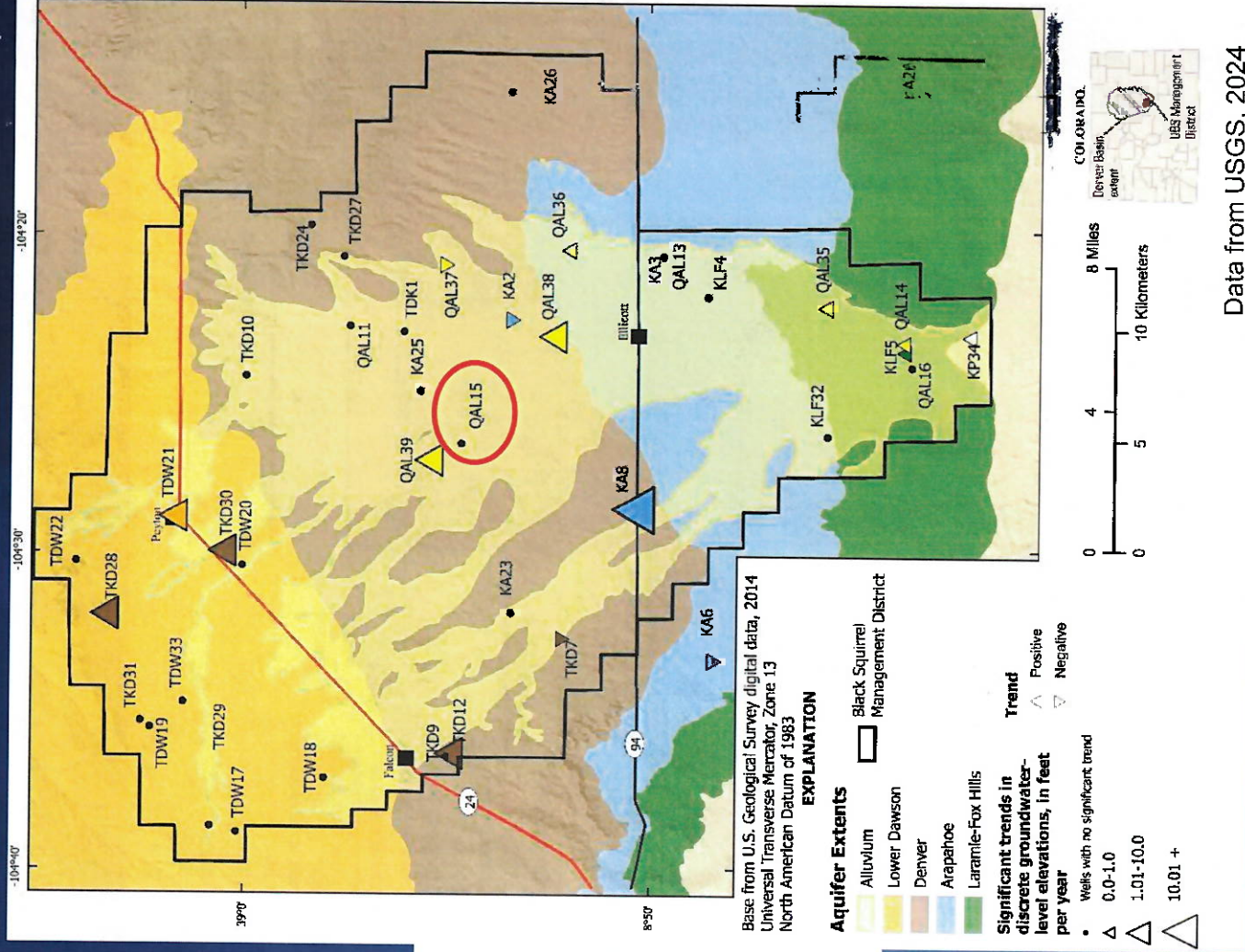
Data from USGS, 2024

EXPLANATION

Groundwater-level Status
 ● Static

No monotonic trends

Decline since June 2023 monsoon precipitation most likely caused spike



Data from USGS, 2024

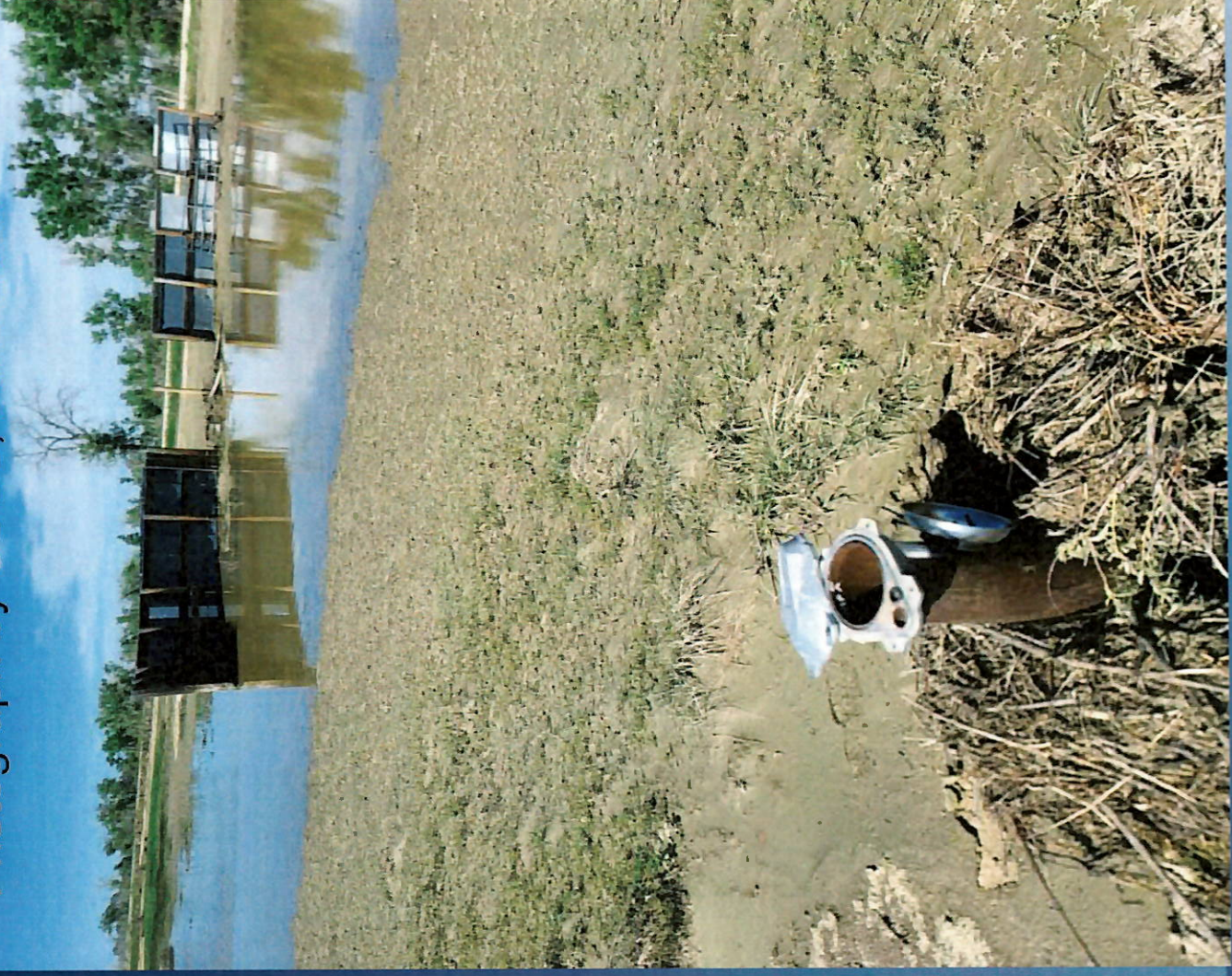


Preliminary Information-Subject to Revision. Not for Citation or Distribution.

QAL15

Alluvial wells can be affected by
local recharge

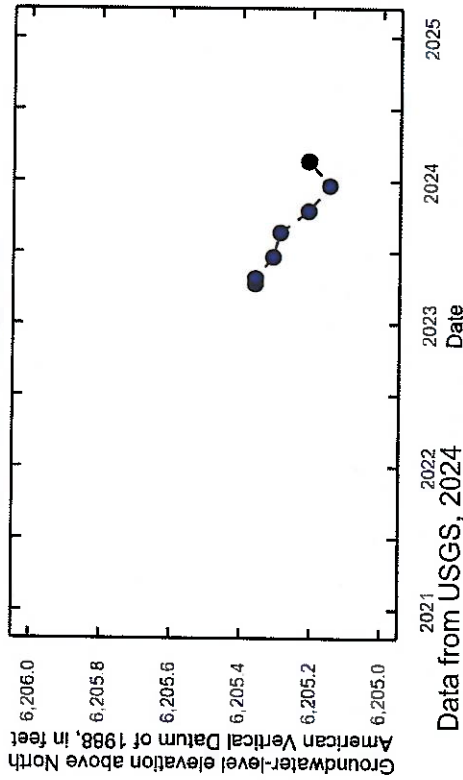
Photograph by USGS, June 2023



Preliminary Information-Subject to Revision. Not for Citation or Distribution.

QAL37

USGS Station Name: SC01306216CBB



Data from USGS, 2024

Significant negative trend through February 2024 but limited by small sample size

EXPLANATION

Groundwater-level Status

● Static

Base from U.S. Geological Survey digital data, 2014 Universal Transverse Mercator, Zone 13 North American Datum of 1983

EXPLANATION

Aquifer Extents

- Alluvium
- Lower Dawson
- Denver
- Arapahoe
- Laramie-Fox Hills

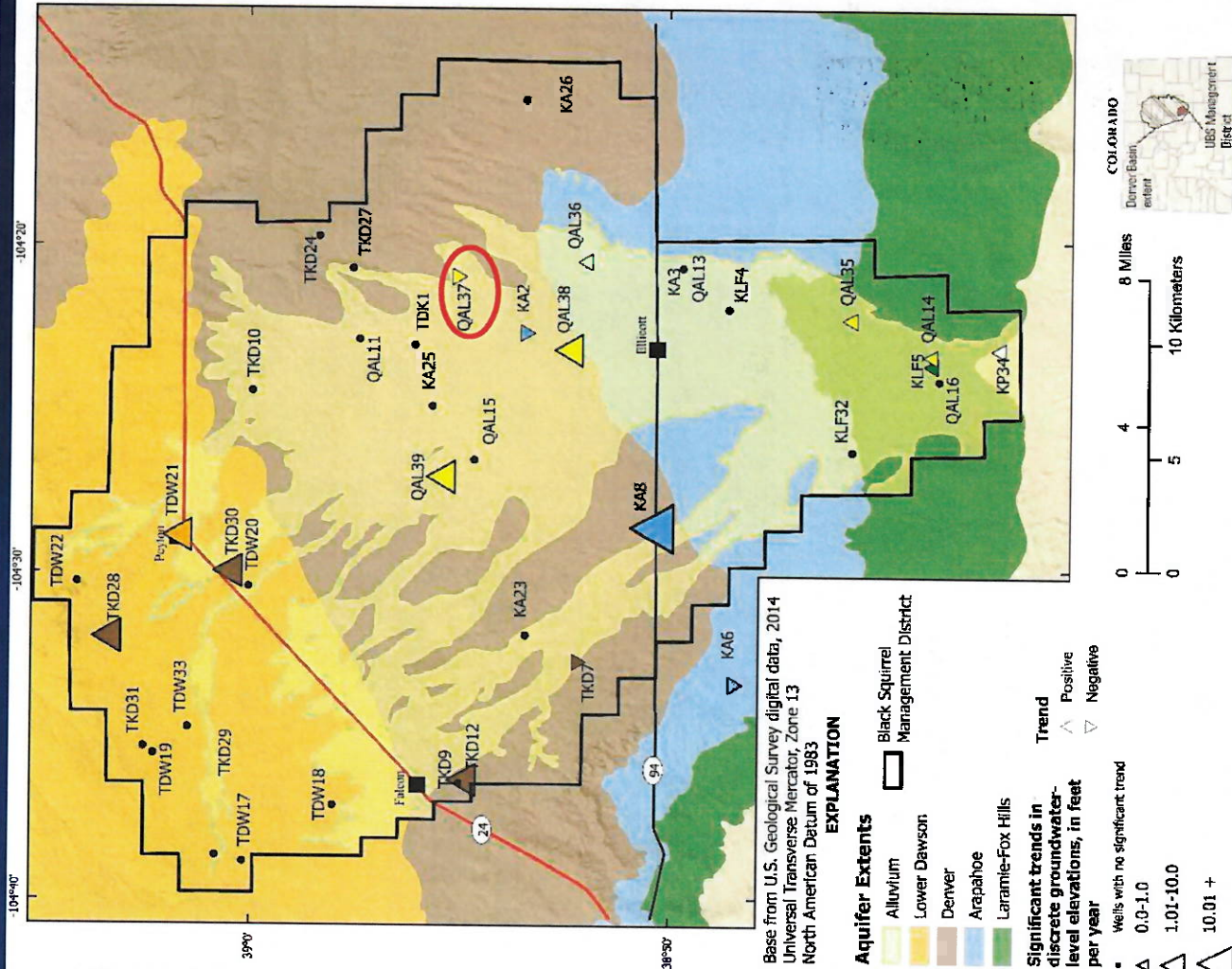
Significant trends in discrete groundwater-level elevations, in feet per year

- Wells with no significant trend
- 0.0-1.0
- 1.01-10.0
- 10.01 +

Trend

- ▲ Positive
- ▼ Negative

Black Squirrel Management District



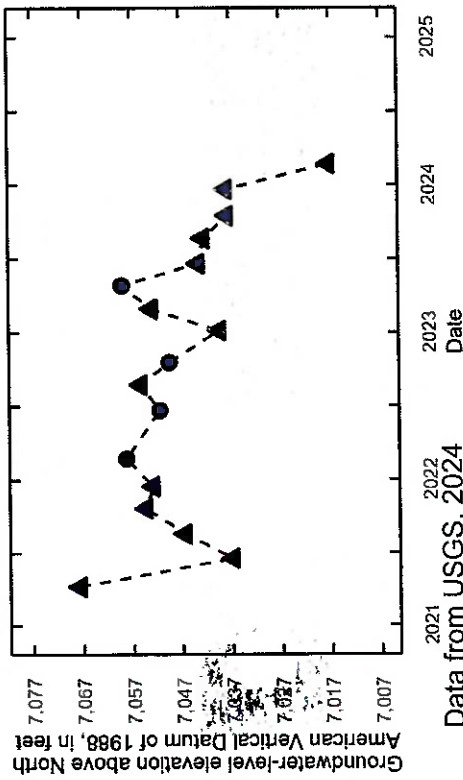
Data from USGS, 2024



Preliminary Information-Subject to Revision. Not for Citation or Distribution.

TDW18

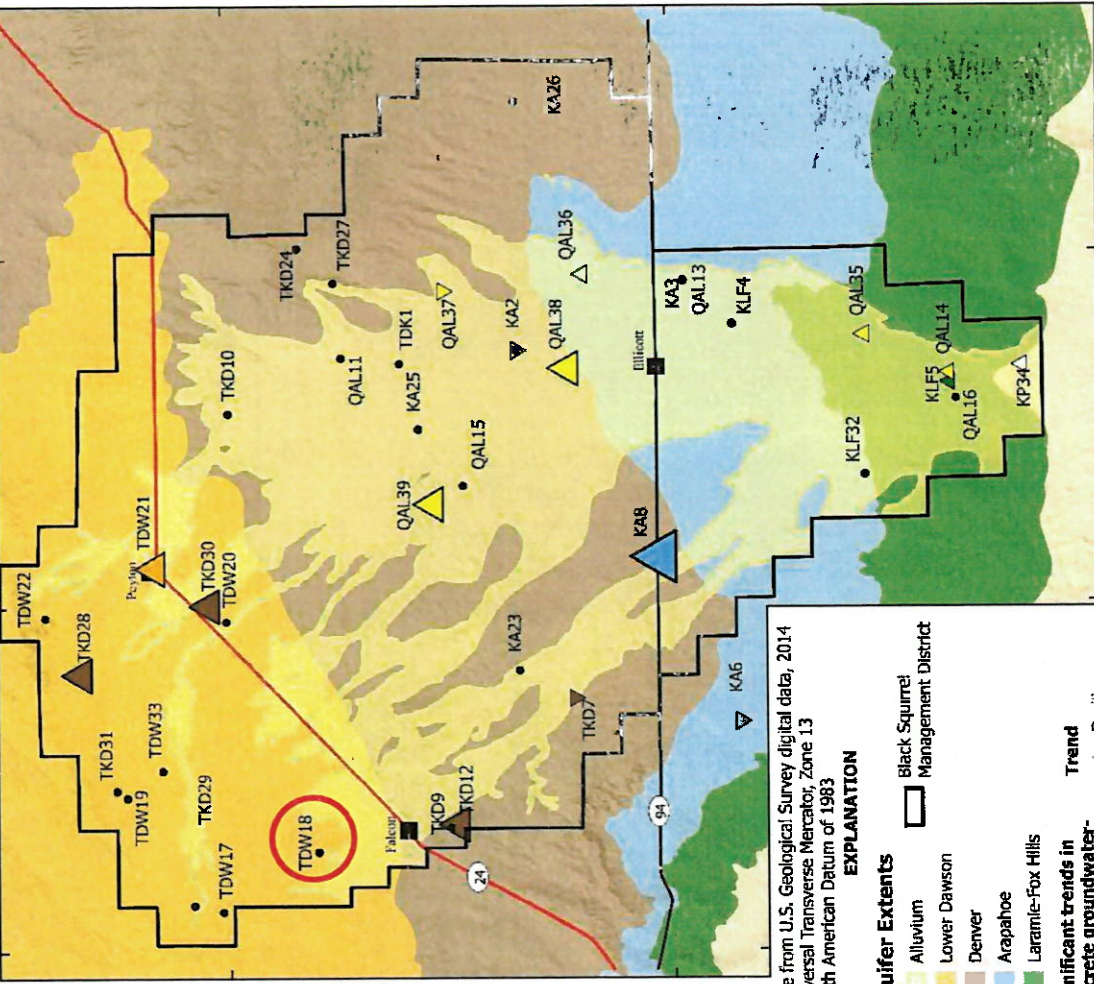
USGS Station Name: SC01206536BAD TDW18



EXPLANATION
 Groundwater-level Status
 ▲ Pumping
 ● Static

No monotonic trend

Many instances of measurements affected by active or recent pumping



Base from U.S. Geological Survey digital data, 2014
 Universal Transverse Mercator, Zone 13
 North American Datum of 1983

EXPLANATION

- Aquifer Extents**
- Alluvium
 - Lower Dawson
 - Denver
 - Arapahoe
 - Laramie-Fox Hills
- Significant trends in discrete groundwater-level elevations, in feet per year**
- Wells with no significant trend
 - 0.0-1.0
 - 1.01-10.0
 - 10.01 +
- Trend**
- ▲ Positive
 - ▼ Negative
- Black Squirrel Management District**



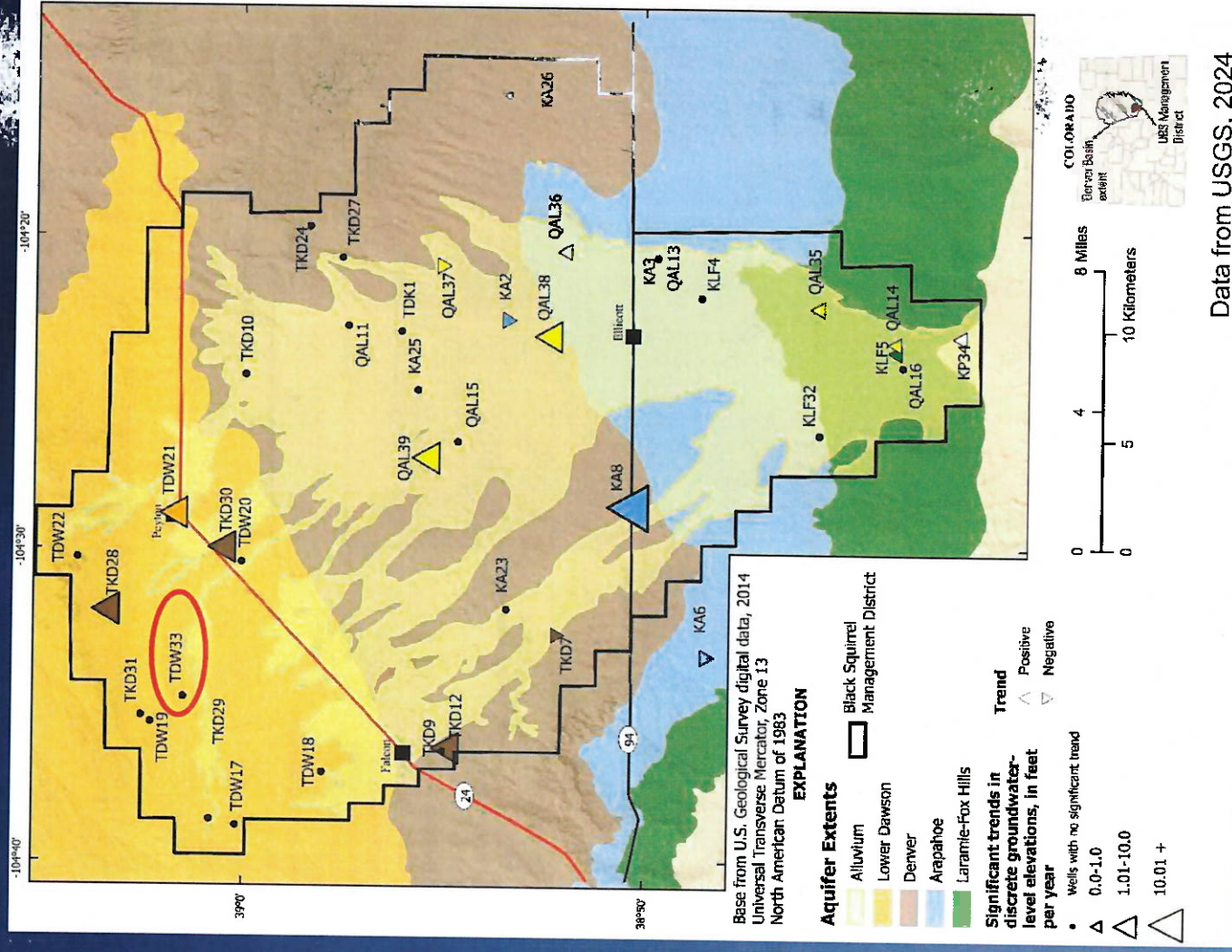
Data from USGS, 2024



Preliminary Information-Subject to Revision. Not for Citation or Distribution.

Preliminary Findings

- Time-series data showed statistically significant trends more often than discrete measurements alone, TDW33
- Fluctuations and trends in measurements from wells in alluvium were affected by 2023 rainy season, QAL15 and QAL39
- Influence of pumping on groundwater-levels could lead to significant trends more often, KA8 and TKD28



Potential Additional Research

1. More nested wells
 - Could drill new wells in areas of interest
2. Aquifer properties
 - Aquifer testing
 - Geophysics techniques
 - Relative-gravity surveys and Borehole magnetic resonance sounding
3. Adjust data collection
 - Could install more transducers
 - Could add more Arapahoe and LFH wells further north
 - Could make more static measurements from existing wells
4. Create analytical element model

Multiphase Water-quality Study

- Phase I
 - Characterize the current (2007) data and compile historical groundwater quality data in the alluvial aquifer
- Phase II
 - What is the relation between land use and the groundwater quality?
 - What is the age of groundwater in the alluvial aquifer?
- Phase III
 - Have nitrate concentrations changed through time since Phase II sampling in 2012?
 - What are the potential sources of nitrate within the alluvial aquifer?

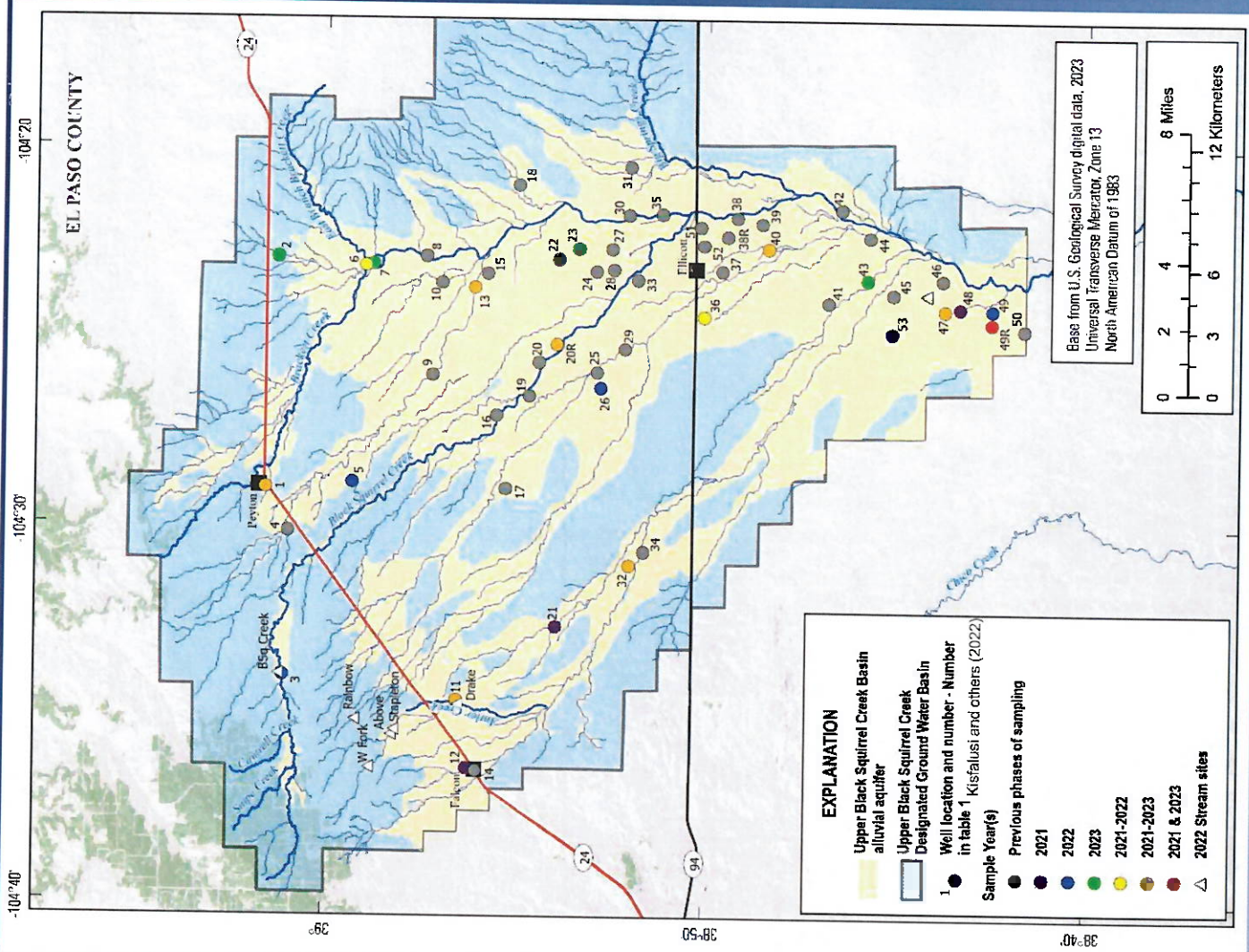
Phase IV Research Questions

- What are the trends relative to time?
 - Nitrate
 - Sources of, and processes potentially affecting, nitrate
 - Aquifer recharge
- What are the potential human influences on the aquifer?
 - Wastewater
 - Agricultural practices
 - Development

Phase IV Data Collection

- 12-14 wells sampled in late October to early November 2021-2023
- 7 wells sampled annually
- 3 others sampled twice
- 12 sampled once
- 6 additional surface-water samples done in 2022
- 3 sites sampled once
- 3 sampled four times

Table 1 is from Kisfalusi and others, 2022



Preliminary Information-Subject to Revision. Not for Citation or Distribution.



Groundwater Sampling

Public supply well



Photograph by USGS,
October 2023

Raw samples are collected as close to wellhead as possible to ensure representative of ambient conditions.

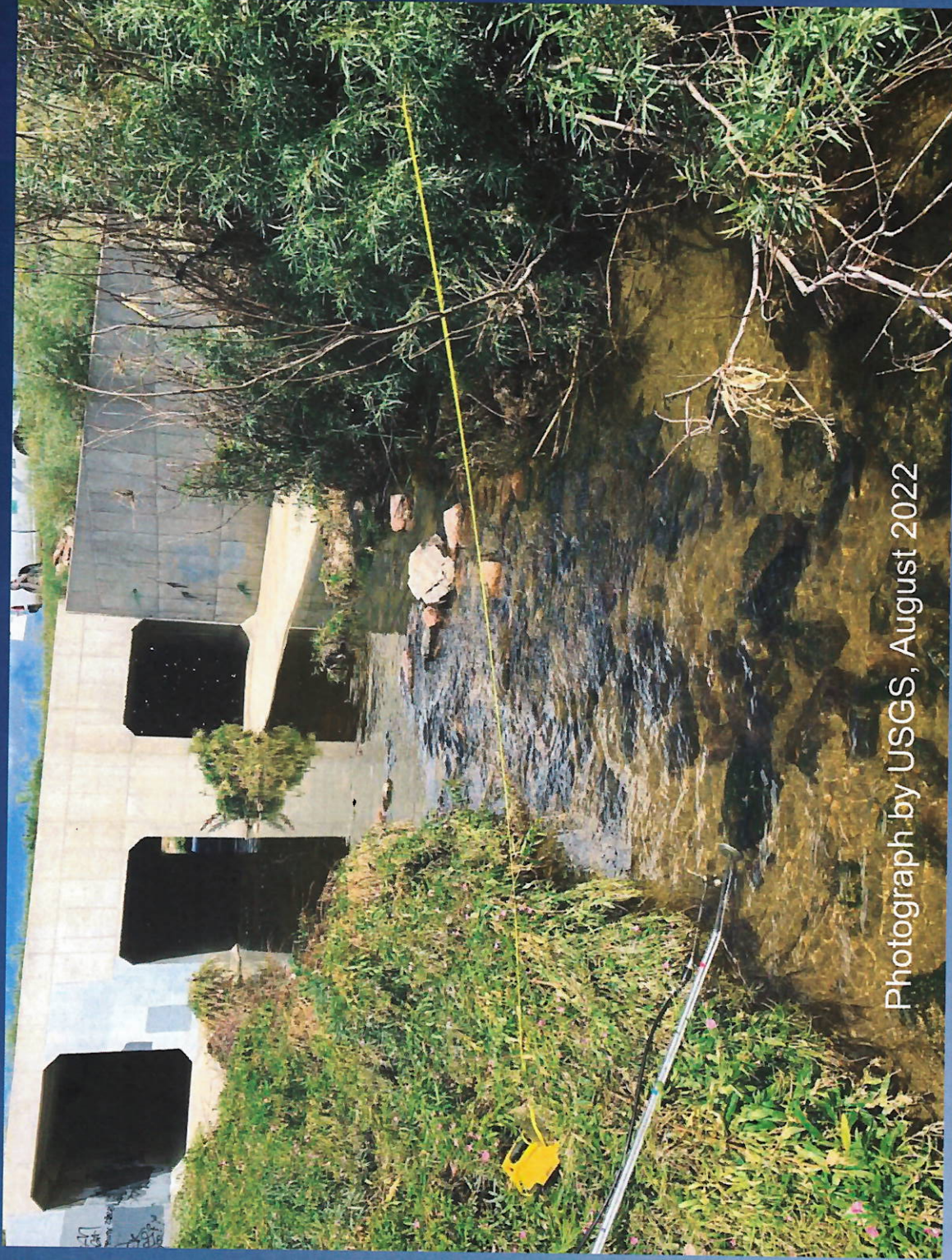
Monitoring well



Photograph by USGS, October 2021

At monitoring wells, samples are collected using a low-flow pump in effort to try to directly pull water out of the aquifer.

Surface water sampling



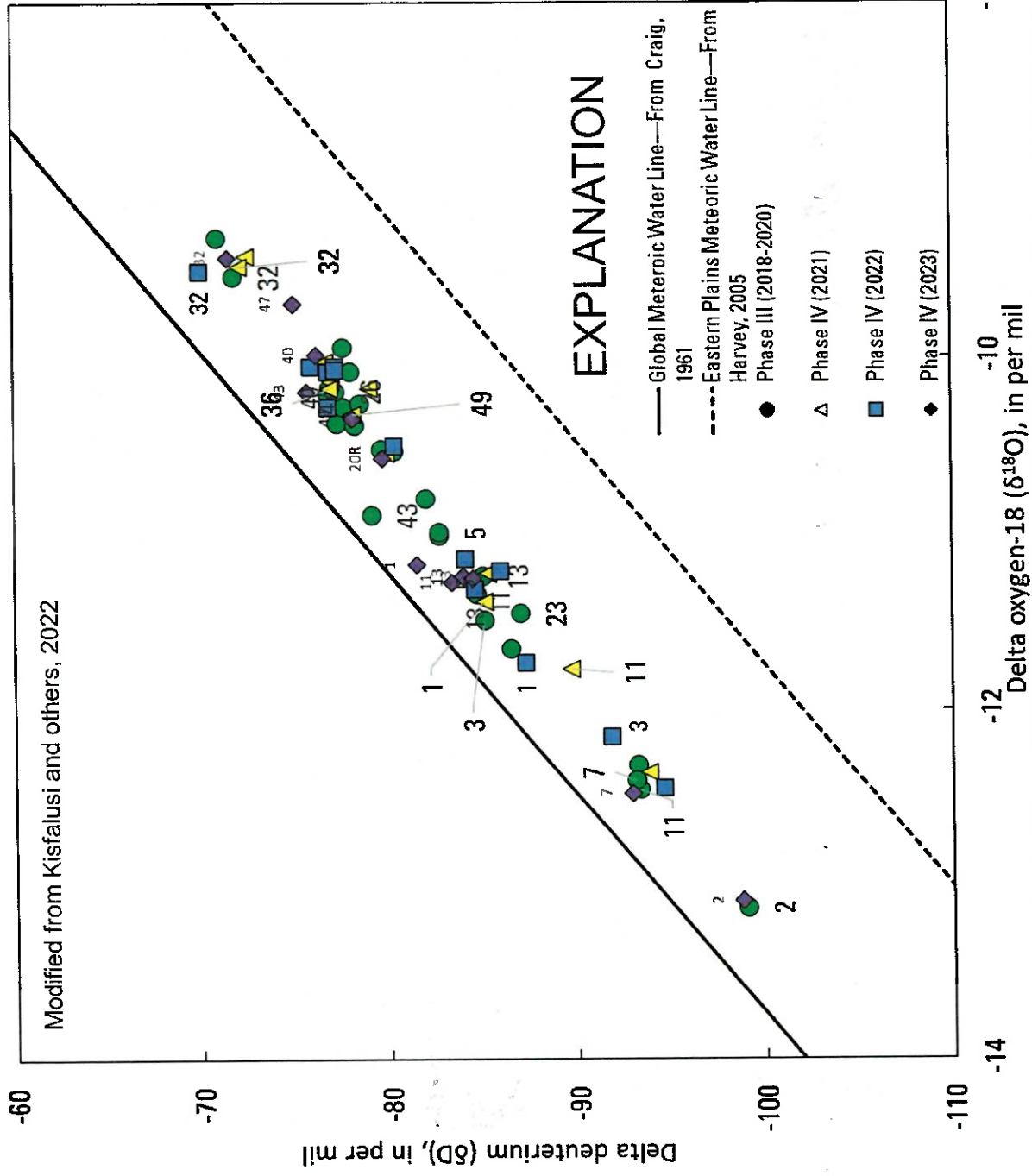
Photograph by USGS, August 2022



Preliminary Information-Subject to Revision. Not for
Citation or Distribution.

Isotopes of water

- Useful for assessing source of recharge
- Meteoric Water is the water derived from precipitation
- Phase IV data are very consistent with phase III samples



-8

-10

-12

-14

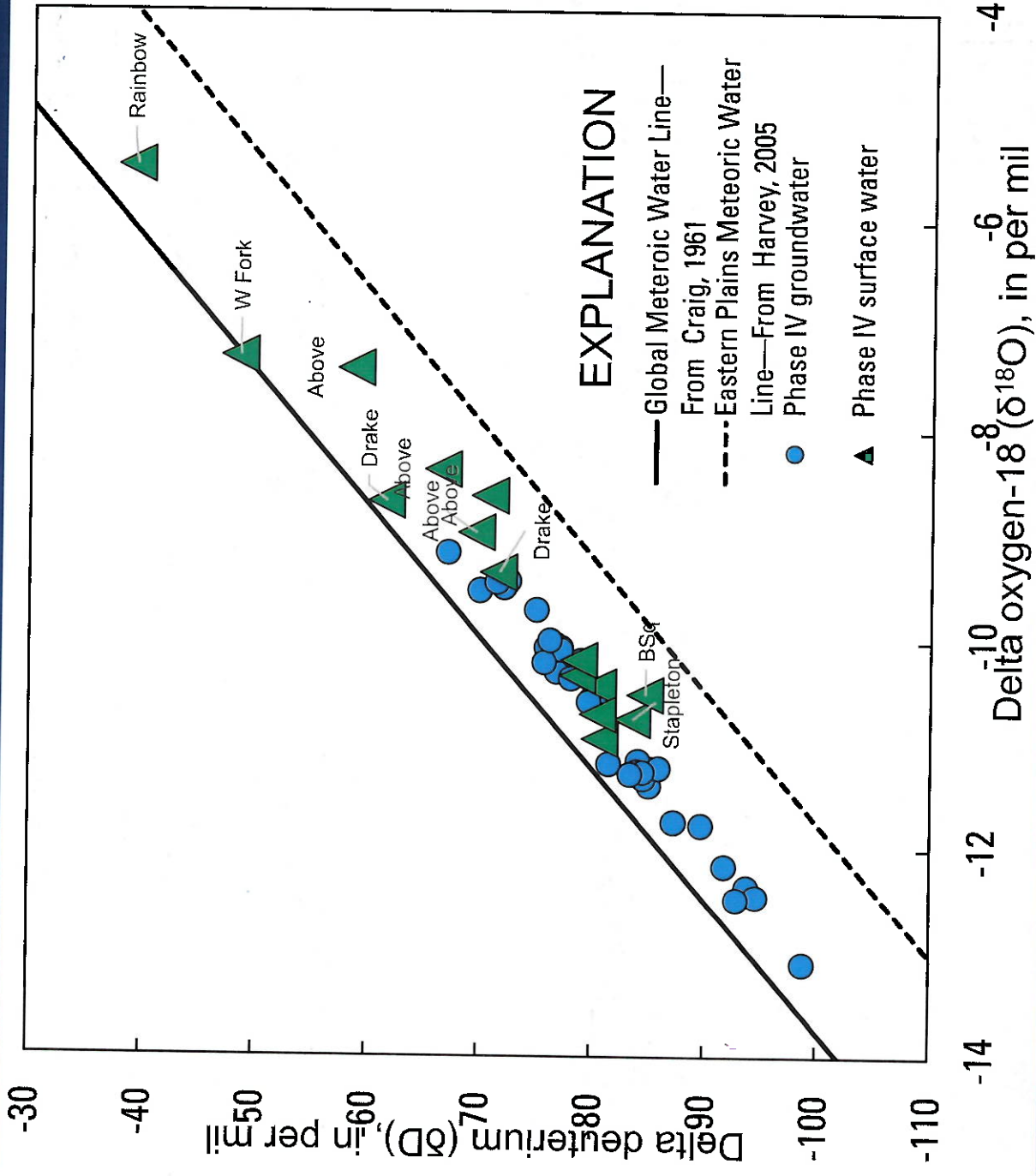
Data from USGS, 2024



Preliminary Information-Subject to Revision. Not for Citation or Distribution.

Isotopes of water

- Samples lower on graph indicated colder recharge, increased elevation or increased rain intensity
- Samples closer to the Eastern Plains MWL indicated a more evaporative signature



Data from USGS, 2024

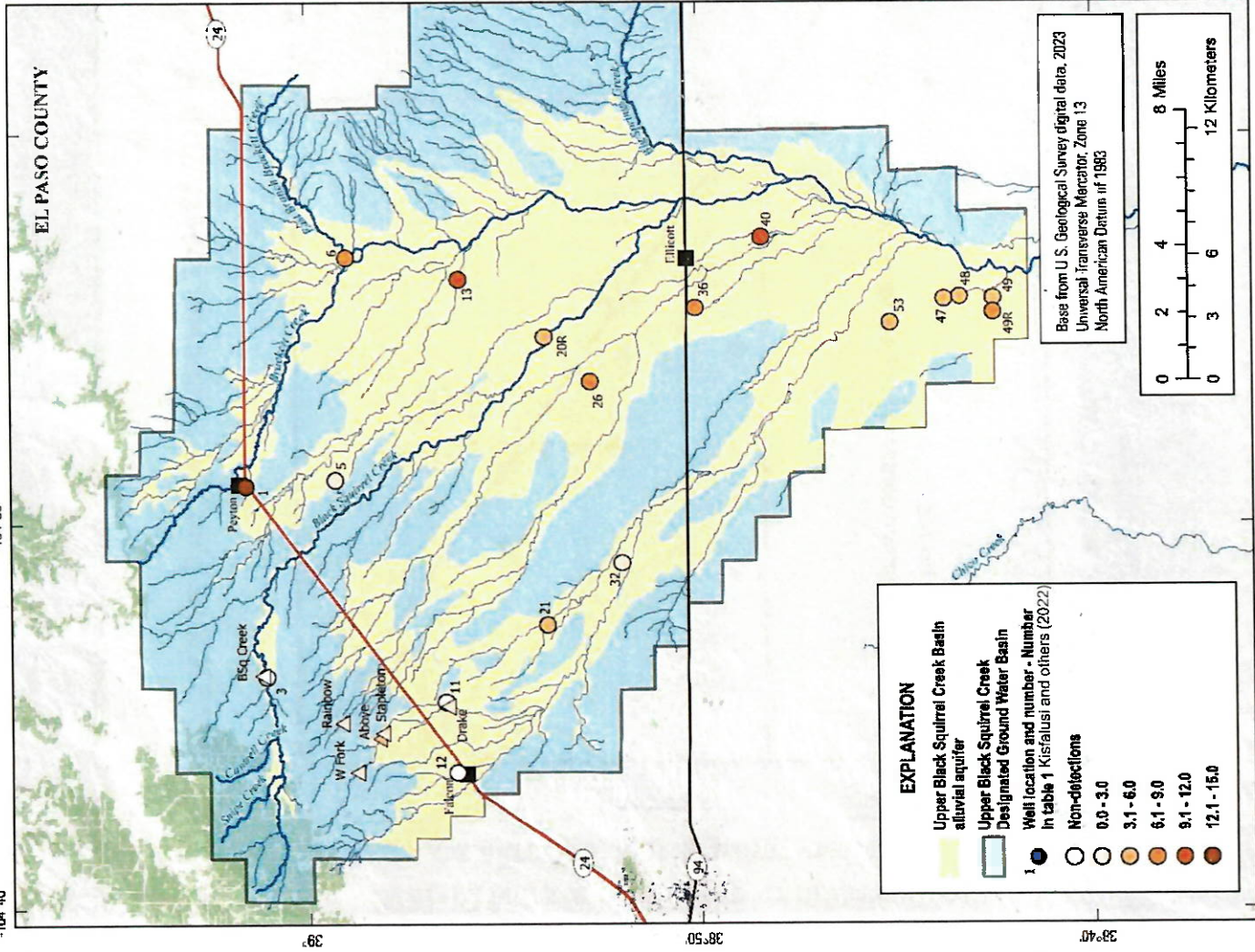
Preliminary Information-Subject to Revision. Not for Citation or Distribution.



Phase IV Nitrate

- Maximum nitrate concentrations from data collected from 2021 to 2022
- EPA (2020) maximum contaminant level (MCL) for nitrate is 10 mg/L for treated drinking water. This is used for comparison purposes only as these values are from raw samples representing ambient groundwater from the alluvial aquifer.

Data from USGS, 2024

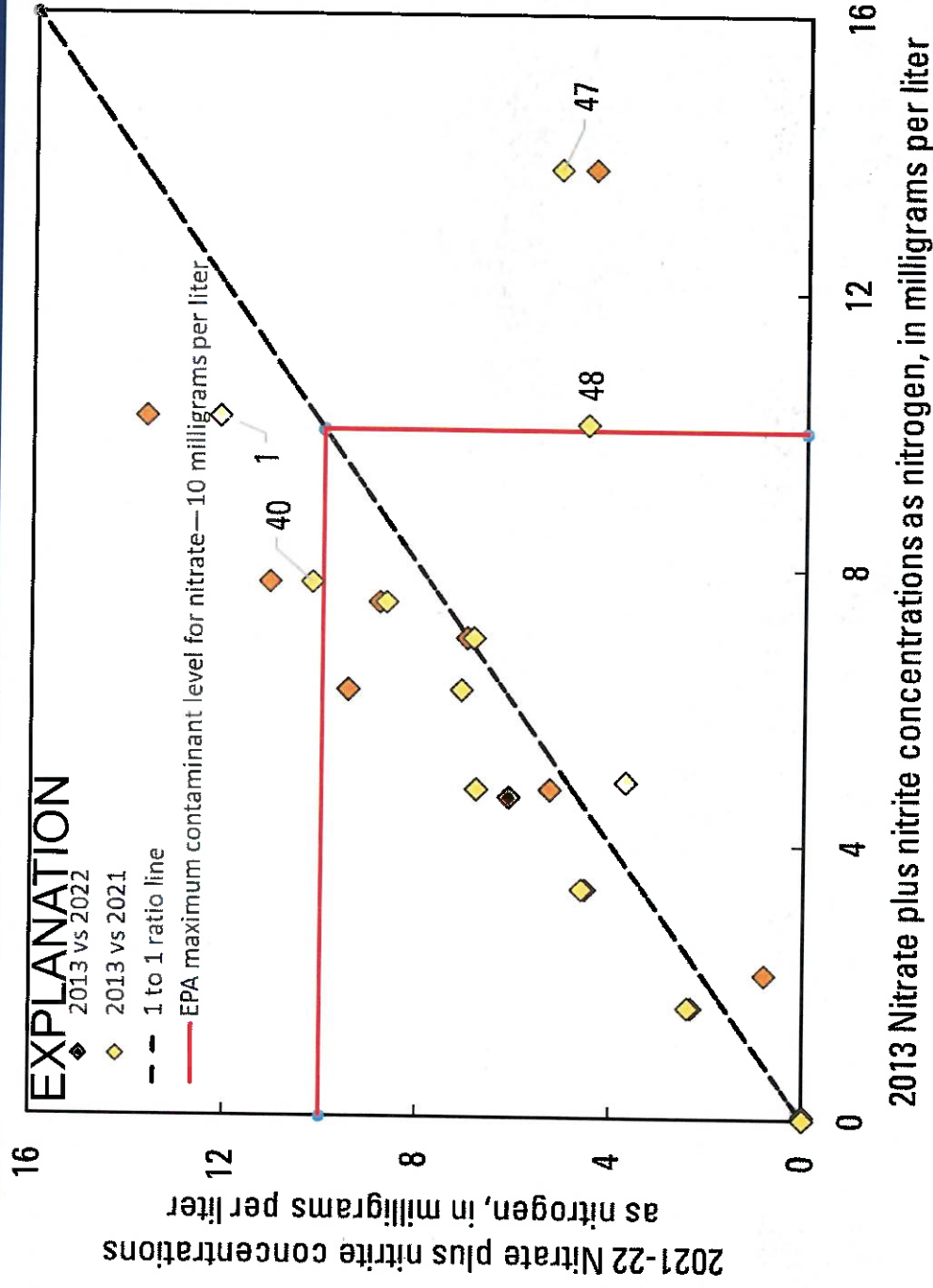


Preliminary Information-Subject to Revision. Not for Citation or Distribution.



Nitrate comparison: 2013 vs 2021-2022

- Anything above the dashed line increased in concentration and vice versa
- 7 increased from 2013 to 2021, 3 decreased, and 3 with minimal (0.5 mg/L)
- 7 increased from 2013 to 2021, 2 decreased, and 4 with minimal (0.5 mg/L)



Data from USGS, 2024

Modified from Kisfalusi and others, 2022

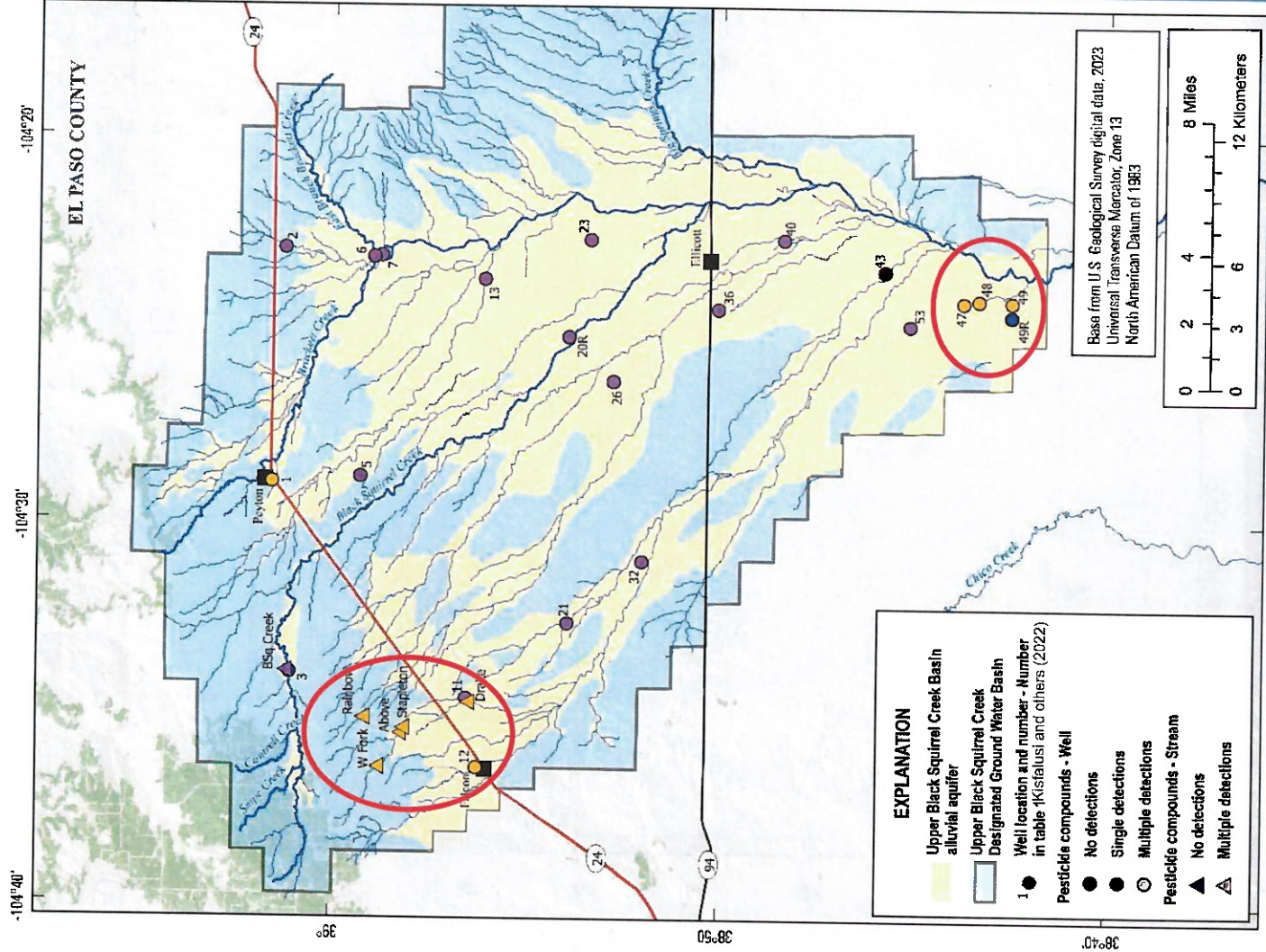


Preliminary Information-Subject to Revision. Not for Citation or Distribution.

Pesticide Compounds

- 162 detections at 12 sites
- Antler Creek at Drake Lake had the most detections (50)
- Atrazine was detected across all sites that had detections
- 16 sites had no detections
- Single detections
 - Well 3 - Transpermethrin
 - Well 49R - Triazole

Data from USGS, 2024

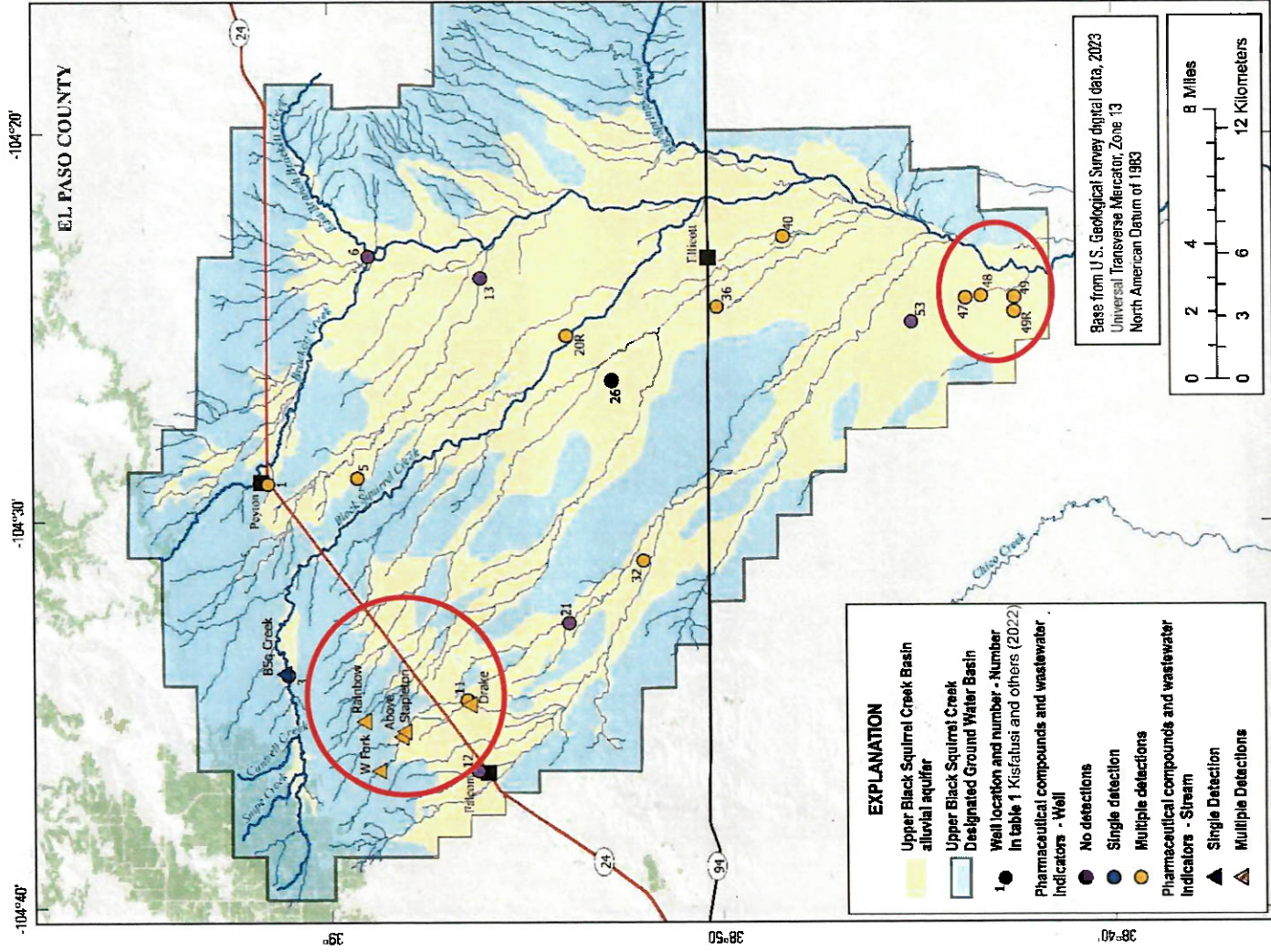


Preliminary Information-Subject to Revision. Not for Citation or Distribution.

Pharmaceutical Compound and Personal-Care Products

- 386 detections at 18 sites
 - Antler Creek Below Stapleton had the most detections (175)
- Sulfamethoxazole, fluconazole, and carbamazepine had the most detections for data collected
- Single detections
 - Black Squirrel Creek – loperamide
 - Well 26 - raloxifene

Data from USGS, 2024



Rare-Earth Elements

1 H HYDROGEN 1.008	2 He HELIUM 4.0026	3 Li LITHIUM 6.941	4 Be BERYLLIUM 9.0122	5 B BORON 10.811	6 C CARBON 12.011	7 N NITROGEN 14.007	8 O OXYGEN 15.999	9 F FLUORINE 18.998	10 Ne NEON 20.180	11 Na SODIUM 22.990	12 Mg MAGNESIUM 24.305	13 Al ALUMINUM 26.982	14 Si SILICON 28.086	15 P PHOSPHORUS 30.974	16 S SULFUR 32.06	17 Cl CHLORINE 35.45	18 Ar ARGON 39.948	19 K POTASSIUM 39.098	20 Ca CALCIUM 40.078	21 Sc SCANDIUM 44.956	22 Ti TITANIUM 47.88	23 V VANADIUM 50.942	24 Cr CHROMIUM 51.996	25 Mn MANGANESE 54.938	26 Fe IRON 55.845	27 Co COBALT 58.933	28 Ni NICKEL 58.693	29 Cu COPPER 63.546	30 Zn ZINC 65.38	31 Ga GALLIUM 69.723	32 Ge GERMANIUM 72.63	33 As ARSENIC 74.922	34 Se SELENIUM 78.96	35 Br BROMINE 79.904	36 Kr KRYPTON 83.80	37 Rb RUBIDIUM 85.468	38 Sr STRONTIUM 87.62	39 Y YTIPIUM 88.906	40 Zr ZIRCONIUM 91.224	41 Nb NIOBIUM 92.906	42 Mo MOLYBDENUM 95.94	43 Tc TECHNETIUM 98	44 Ru RHODIUM 101.07	45 Rh RHODIUM 102.91	46 Pd PALLADIUM 106.42	47 Ag SILVER 107.87	48 Cd CADMIUM 112.41	49 In INDIUM 114.82	50 Sn TIN 118.71	51 Sb ANTIMONY 121.76	52 Te TELLURIUM 127.6	53 I IODINE 126.90	54 Xe XEON 131.29	55 Cs CAESIUM 132.91	56 Ba BARIUM 137.33	57-71* Lanthanide Series	58 Ra RADIUM 226	89-103** Actinide Series	72 Hf HAFNIUM 178.49	73 Ta TANTALUM 180.95	74 W WOLFRAM 183.84	75 Re RHENIUM 186.21	76 Os OSMIUM 190.23	77 Ir IRIDIUM 192.22	78 Pt PLATINUM 195.08	79 Au GOLD 196.97	80 Hg MERCURY 200.59	81 Tl THALLIUM 204.38	82 Pb LEAD 207.2	83 Bi BISMUTH 208.98	84 Po POLONIUM 209	85 At ASTATINE 210	86 Rn RADON 222	87 Fr FRANCIUM 223	88 Ra RADIUM 226	89-103** Actinide Series	90 Th THORIUM 232.04	91 Pa PROTACTINIUM 231.04	92 U URANIUM 238.03	93 Np NEPTUNIUM 237.05	94 Pu PLUTONIUM 244.06	95 Am AMERICIUM 243.06	96 Cm CURIUM 247.07	97 Bk BERKELIUM 247.07	98 Cf CALIFORNIUM 251.08	99 Es EINSTEINIUM 252.08	100 Fm FERMIUM 257.10	101 Md MADDEMIUM 258.10	102 No NORBOLIUM 259.10	103** Lr LAWRENCIUM 262.10	70 Yb YTERBIUM 173.054	71 Lu LUTETIUM 174.967	69 Tm THULIUM 168.934	68 Er ERBIUM 167.259	67 Ho HOLMIUM 164.930	66 Er ERBIUM 167.259	65 Dy DYSPROSIUM 162.500	64 Tb TERBIUM 158.925	63 Gd GADOLINIUM 157.25	62 Eu EUROPEIUM 151.964	61 Pm PROMETHIUM 145	60 Sm SAMARIUM 150.36	59 Pr PRASEODYMIUM 140.908	58 Ce CERIUM 140.12	57 La LANTHANUM 138.905
------------------------------------	------------------------------------	------------------------------------	---------------------------------------	----------------------------------	-----------------------------------	-------------------------------------	-----------------------------------	-------------------------------------	-----------------------------------	-------------------------------------	--	---------------------------------------	--------------------------------------	--	-----------------------------------	--------------------------------------	------------------------------------	---------------------------------------	--------------------------------------	---------------------------------------	--------------------------------------	--------------------------------------	---------------------------------------	--	-----------------------------------	-------------------------------------	-------------------------------------	-------------------------------------	----------------------------------	--------------------------------------	---------------------------------------	--------------------------------------	--------------------------------------	--------------------------------------	-------------------------------------	---------------------------------------	---------------------------------------	-------------------------------------	--	--------------------------------------	--	-------------------------------------	--------------------------------------	--------------------------------------	--	-------------------------------------	--------------------------------------	-------------------------------------	----------------------------------	---------------------------------------	---------------------------------------	------------------------------------	-----------------------------------	--------------------------------------	-------------------------------------	------------------------------------	----------------------------------	------------------------------------	--------------------------------------	---------------------------------------	-------------------------------------	--------------------------------------	-------------------------------------	--------------------------------------	---------------------------------------	-----------------------------------	--------------------------------------	---------------------------------------	----------------------------------	--------------------------------------	------------------------------------	------------------------------------	---------------------------------	------------------------------------	----------------------------------	------------------------------------	--------------------------------------	---	-------------------------------------	--	--	--	-------------------------------------	--	--	--	---------------------------------------	---	---	--	--	--	---------------------------------------	--------------------------------------	---------------------------------------	--------------------------------------	--	---------------------------------------	---	---	--------------------------------------	---------------------------------------	--	-------------------------------------	---

Rare earth elements are useful indicators of redox processes, groundwater mixing, water-rock reaction, and for tracing human influenced water sources, Newman and others, 2021.

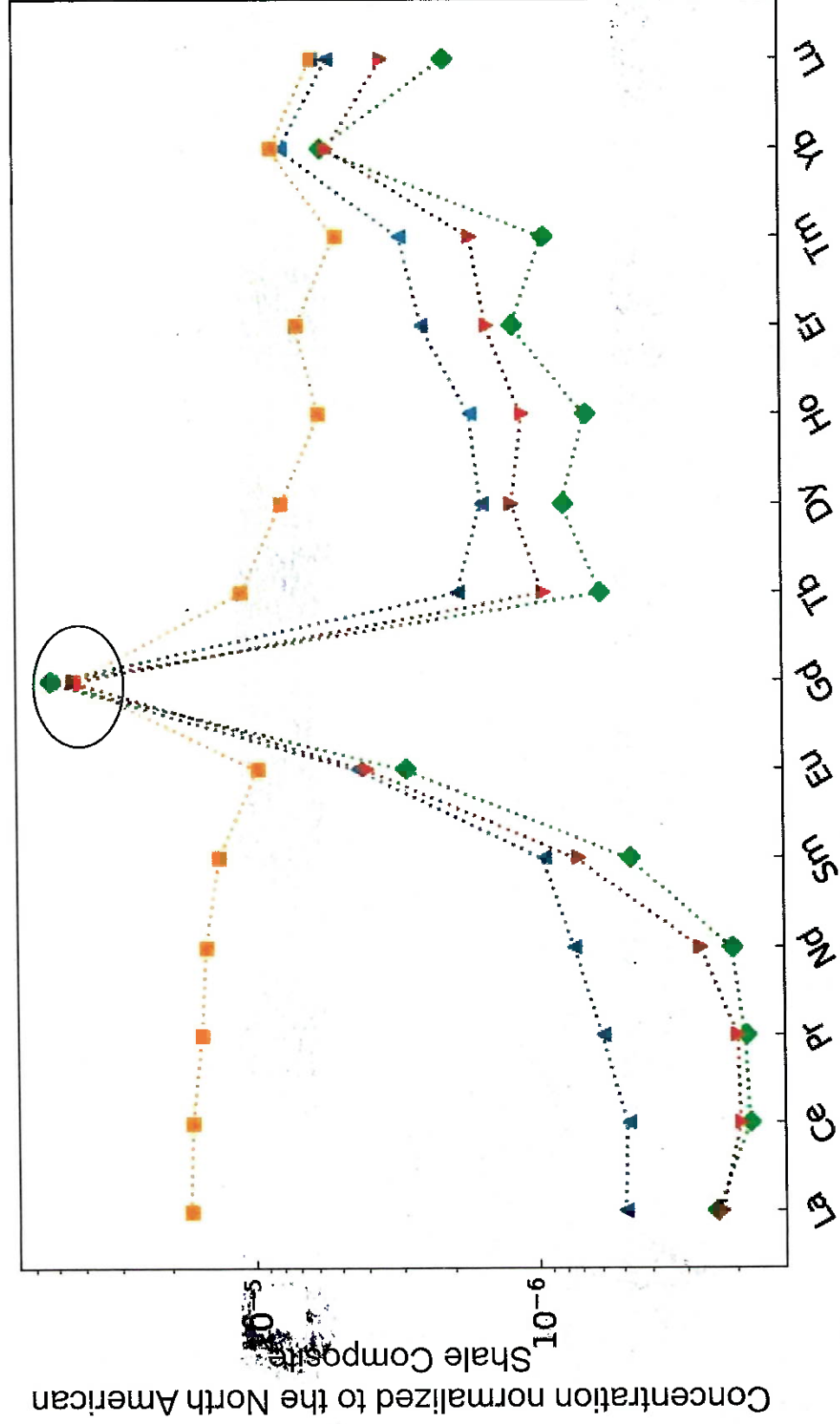


Preliminary Information-Subject to Revision. Not for Citation or Distribution.

Rare-Earth Elements

Data from USGS, 2024

STAPLETON



EXPLANATION

- 2022-08-09 10:30:00
- 2022-07-07 12:15:00
- 2022-03-04 19:30:00
- 2022-11-09 11:45:00

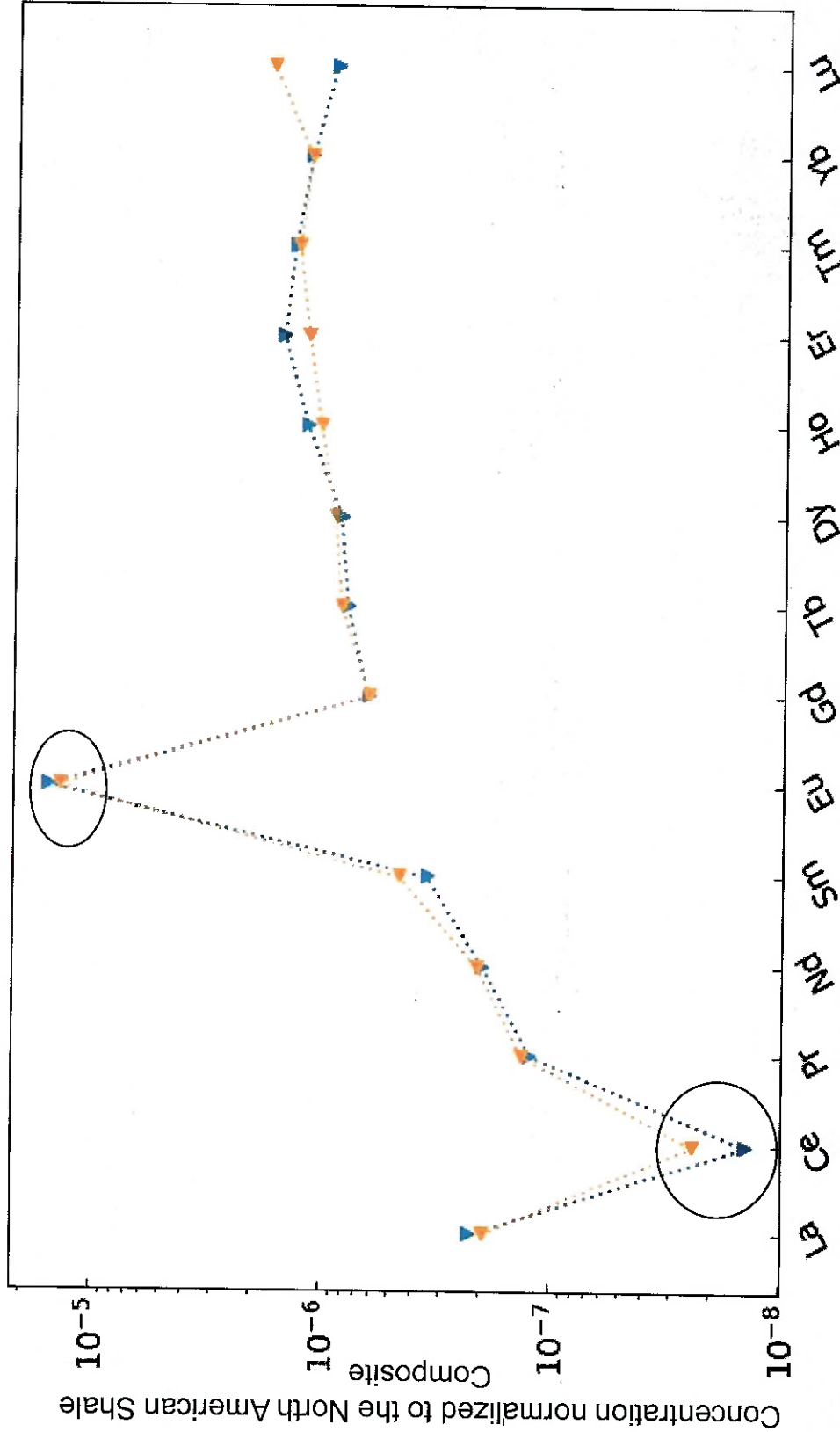
Preliminary Information-Subject to Revision. Not for Citation or Distribution.



Rare-Earth Elements

Data from USGS, 2024

20R



EXPLANATION

- 2021-10-25 10:00:00
- 2022-11-03 10:30:00

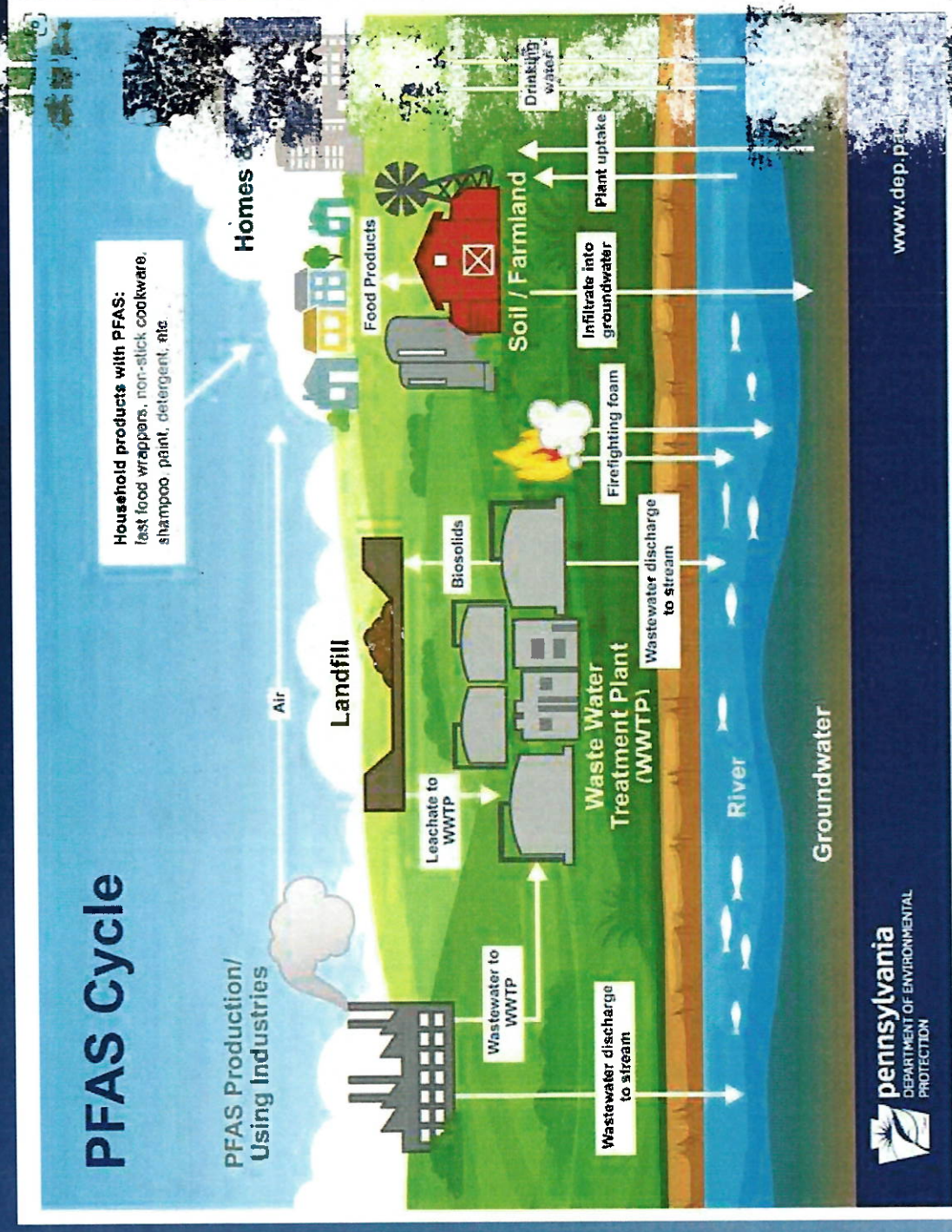


Preliminary Information-Subject to Revision. Not for Citation or Distribution.

Per- and polyfluoroalkyl substances (PFAS) compounds

PFAS

- Family of related human-made compounds
- 4,000+ fluorinated organic compounds in use since 1940s
- Colorless, odorless, and resistant to heat, oil, and water
- Due to their strong bonds, dubbed “forever” chemicals,
- Long-chain PFAS compound half-lives of more than 40 years (Travis and others, 2023).



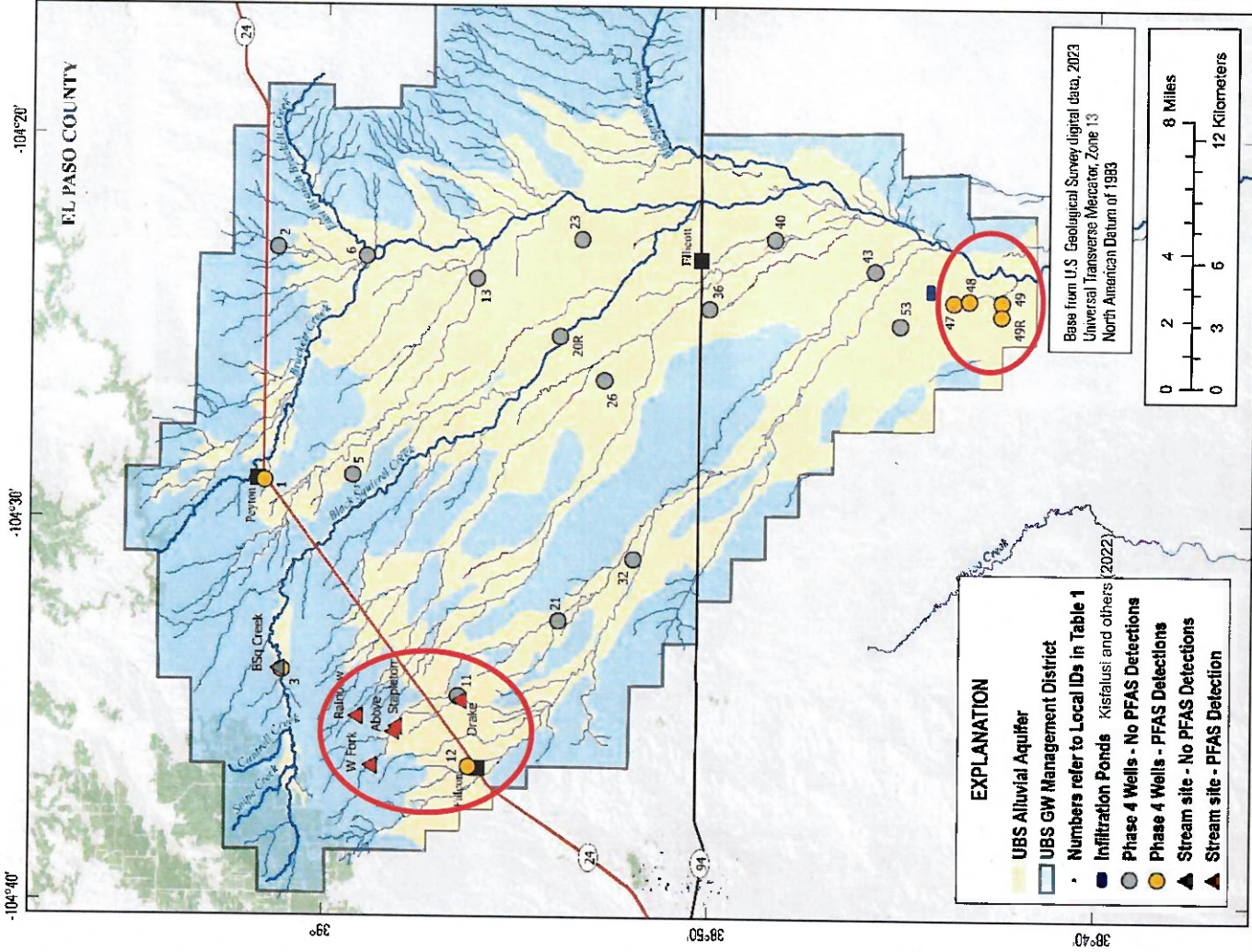
Preliminary Information-Subject to Revision. Not for Citation or Distribution.



Preliminary PFAS compound detections

- Samples were from 2021 and 2022 sampling and were mainly detected in two areas - the northwest section near Falcon and the southernmost part of the basin.
- Detections include the following groups of these compounds: PFBS, PFHxS Linear, PFOS Linear, PFBA, PFPeA, PFHxA, PFHpA, PFOA, PFNA, PFDA, and 6 FTS

Data from USGS, 2024



Preliminary PFAS compound detections

[ID, identification; R, replacement well; mm, month; dd, day; yyyy, year; ng/L, nanograms per liter; --, not detected; E, estimated concentration; italicized had concentration below dilution adjusted method reporting level]

Local id	Sample date (mm/dd/yyyy)	PFBS (ng/L)	PFHxS Linear (ng/L)	PFOS Linear (ng/L)	PFBA (ng/L)	PFPeA (ng/L)	PFHxA (ng/L)	PFHpA (ng/L)	PFOA (ng/L)	PFNA (ng/L)	PFDA (ng/L)	6:2 FTS (ng/L)
48	10/27/2021	22.4	1.9	--	--	34.1	30.9	E 3.5	E 8.3	--	--	--
12	10/28/2021	5.9	1.8	--	--	--	4.5	--	--	--	--	--
1	10/29/2021	11.3	6.6	3.1	--	E 14.5	16.7	10.1	21.7	--	--	--
47	11/3/2021	16.4	--	--	--	32	29.8	--	9.3	--	--	--
49R	11/3/2021	22.6	--	--	--	17.3	17.2	--	7.2	--	--	--
1	10/31/2022	--	4.3	E 8.5	E 16.0	16.3	18.1	10.2	23.5	1.3	--	--
47	11/1/2022	E 9.6	--	--	E 12.4	33.2	28.5	--	8.3	0.2	--	--
49	11/1/2022	E 16.68	--	--	--	21.2	19.3	--	E 3.3	--	--	--
3	11/8/2022	--	--	--	--	--	--	--	--	--	--	E 17.9
Above	3/1/2022	23.3	--	--	--	5.9	9.7	--	4.6	--	--	--
Stapleton	3/1/2022	--	--	--	E 8.0	38.4	51.4	--	32.3	--	--	--
Drake	3/1/2022	8.7	--	--	--	32.2	45.1	--	20.3	--	--	--
Rainbow	7/7/2022	14.2	--	--	--	87.8	19.2	--	--	--	--	--
Above	7/7/2022	19.3	--	--	--	112	--	--	--	--	--	--
Stapleton	7/7/2022	12.8	--	--	--	50.1	28.6	--	E 19.1	--	--	--
Drake	7/7/2022	14.4	--	--	--	--	22.3	--	E 13.7	--	--	--
W Fork	8/8/2022	5.9	--	--	--	--	--	--	--	--	--	--
Above	8/9/2022	18.8	--	6.3	E 17.2	59.7	29.4	E 8.7	16.4	2.1	E 2.5	--
Stapleton	8/9/2022	7.8	--	--	--	46.4	38.3	--	19.3	--	--	--
Drake	8/9/2022	17.5	--	--	E 30.8	41.4	35.5	E 4.3	18.4	1.5	--	--
Above	11/9/2022	E 10.7	--	--	--	--	6	--	E 4.3	--	--	--
Stapleton	11/9/2022	E 5.3	--	--	--	26	29.8	--	E 16.6	--	--	--
Drake	11/9/2022	E 12.9	--	--	--	28.6	27.4	E 3.9	E 18.5	--	--	--

Data from USGS, 2024

Preliminary Information-Subject to Revision. Not for Citation or Distribution.



Preliminary takeaways...so far

- Nitrate concentrations increased since phase II at a majority of wells
- Preliminary USGS results of human-made compounds, including PFAS, occurrence in the Upper Black Squirrel Basin were mainly detected in two areas - the northwest section near Falcon and the southernmost part of the basin.
- Aquifer recharge was dominated by precipitation with potentially more influence from seasonality and water-rock interactions near the aquifer boundaries where the aquifer is thinner

Potential Additional Data Analysis

- Refine relations between various parameters
 - Principal component analysis
- Evaluate trends through time
 - Nitrate specifically
- The USGS assessment of water quality and quantity is ongoing to help inform local water management decisions. Some potential ideas for continued monitoring include
 - Refine sampling constituent list
 - Investigate aquifer connectivity to Denver Basin
 - Focus on specific areas of human influence

References

- U.S. Geological Survey (USGS), 2024, USGS water data for the Nation: U.S. Geological Survey National Water Information System database, <https://doi.org/10.5066/F7P55KJN>.
- Malenda, H.F., and Penn, C.A., 2020, Groundwater levels in the Denver Basin bedrock aquifers of Douglas County, Colorado, 2011–19: U.S. Geological Survey Scientific Investigations Report 2020–5076, 44 p., <https://doi.org/10.3133/sir20205076>.
- Cunningham, W.L., and Schalk, C.W., comps., 2011, Groundwater technical procedures of the U.S. Geological Survey: U.S. Geological Survey Techniques and Methods 1–A1, 151 p., <https://pubs.usgs.gov/tm/1a1/>
- Kisfalusi, Z.D., Bauch, N.J., and Bern, C.R., 2022, Characterization of and temporal changes in groundwater quality of the Upper Black Squirrel Creek Basin, El Paso County, Colorado, 2018–20: U.S. Geological Survey Scientific Investigations Report 2022–5061, 43 p., <https://doi.org/10.3133/sir20225061>.
- Craig, H., 1961, Isotopic variations in meteoric waters: Science, v. 133, no. 3465, p. 1702–1703, accessed April 26, 2021, at <https://www.science.org/doi/10.1126/science.133.3465.1702>.
- Harvey, F.E., 2005, Stable hydrogen and oxygen isotope composition of precipitation in northeastern Colorado: Journal of the American Water Resources Association, v. 41, no. 2, p. 447–460, at <https://doi.org/10.1111/j.1752-1688.2005.tb03748.x>.
- U.S. Environmental Protection Agency, [EPA], 2020, National primary drinking water regulations: U.S. Environmental Protection Agency web page, at <https://www.epa.gov/ground-water-and-drinking-water/national-primary-drinking-water-regulations>.
- Newman, C.P., Paschke, S.S., and Keith, G., 2021, Natural and anthropogenic geochemical tracers to investigate residence times and groundwater–surface-water interactions in an urban alluvial aquifer: Water, v. 13, no. 6, article 871, 30 p., accessed June 23, 2021, at <https://doi.org/10.3390/w13060871>.
- Travis, R.E., Beisner, K.R., Wilkins, K.L., Jasmann, J.R., Keefe, S.H., and Barber, L.B., 2024, Assessment of perand polyfluoroalkyl substances in water resources of New Mexico, 2020–21: U.S. Geological Survey Scientific Investigations Report 2023–5129, 98 p., <https://doi.org/10.3133/sir20235129>.

Photograph by USGS, October 2023



Photograph by
November 2023

Thank you!





Emergency Response Plan

**Eos Sequestration, LLC
Chico Basin Ranch West**

Stratigraphic Test Well

El Paso County, Colorado

PREPARED BY:

**Eos Sequestration, LLC
5525 W. 56th Ave., Suite 200
Arvada, CO 80002**

October 2023

1.0 Introduction

Eos Sequestration, LLC (Eos) prepared this Emergency Response Plan (Plan) for a proposed stratigraphic well northeast of Pueblo in El Paso County, Colorado. The Chico Basin Ranch West stratigraphic well will be a conventional vertical well used only to study subsurface geology. It will have no hydraulic fracturing and no production of oil or gas. The well will be approximately 6,500 feet deep. The well pad will be approximately 4.19 acres during development and will be downsized to approximately 1.83 acres after interim reclamation. It will be in the following location:

Table 1. Well Location

Location	Qtr Qtr T17S R62W	Lat/Lon
Chico Basin Ranch West	NWSE Sec. 30	38.542383, -104.375285

The stratigraphic well is part of the planning process for Project Eos, a collaboration among Carbon America, Colorado School of Mines, and Los Alamos National Laboratory. Project Eos was awarded funding from the U.S. Department of Energy's CarbonSAFE Initiative to explore the potential for an underground storage project for carbon dioxide emissions generated by parts of the industrial sector in the Pueblo area. The stratigraphic well will be located on Colorado State Land Board rangeland. If the subsurface is found geologically suitable, a carbon storage and sequestration project is expected to follow with permitting and oversight from multiple government agencies after public input.

The stratigraphic well will be permitted by the Energy & Carbon Management Commission (ECMC). This Plan addresses the ECMC requirement at Rule 304.c.(8) to prepare an Emergency Response Plan and coordinate approval with the local emergency response agency. ECMC guidance (February 16, 2021) requires the Plan to contain the information in Table 2.

Table 2. Required Content for the Emergency Response Plan

1	Local response agency and contact information
2	Date the plan was finalized and approved by the local response agency
3	Directions to the location from the nearest public road intersection
4	Ingress and egress information
5	Legal description (quarter section, township, range, latitude, longitude)
6	Operator and staff emergency contact information
7	Listing of mutual aid agencies
8	Staffing of local and mutual aid agencies
9	Description of site setting including the surrounding area
10	Detailed layout of the Oil & Gas Location
11	Detailed description of the equipment and stored material
12	Sensitive areas
13	Potential impacts, prevention, and mitigation
14	Response equipment, instruments, materials
15	Health and safety action levels, decontamination, staging areas
16	Training coordinated with local responders

1. Local Response Agency and Contact Information

Table 3. Local Response Agency and Contact Information

Agency	Contact	Contact Information
Hanover Fire Protection District – Station 1 17550 S. Peyton Hwy. Colorado Springs, CO 80928	Carl Tatum, Fire Chief	(719) 382-1900 carl.tatum3500@gmail.com
El Paso County Sheriff's Office 27 E. Vermijo Ave. Colorado Springs, CO 80903	Joseph Roybal, Sheriff	(719) 520-7202 shrweb@elpasoco.com

2. Date the Plan was Finalized and Approved by the Local Response Agency

This Emergency Response Plan was provided to the local response agency for review. Attachment 3 demonstrates the coordination and local response.

3. Directions to the Location from the Nearest Public Road Intersection

From I-25

- Exit I-25 at Old Pueblo Rd./Pikes Peak International Raceway
- North on Old Pueblo Rd. for 1.25 miles
- East on Hanover Rd. for 12 miles
- South on S. Peyton Hwy. for 2 miles
- East on State Land Board access for 3.5 miles
- Northeast on access to Chico Basin Ranch West well for 0.75 mile

4. Ingress and Egress Information

Ingress

- The start of the access constructed for the well pad is 38.535516, -104.385658.
- Continue northeast for 0.75 mile on the unsecured dirt access road to the well pad.
- If needed, a muster point is shown on the Location Drawing in Attachment 1.

Egress

- Access roads and the well pad will accommodate emergency vehicles and turn-around.

5. Legal Description

Table 4. Legal Description

Chico Basin Ranch West	
Qtr Qtr	NWSE
Section	30
Township	17 South
Range	62 West
County	El Paso
Lat	38.542383
Lon	-104.375285

6. Operator and Staff Emergency Contact Information

Table 5. Operator Contact Information

Position	Contact
Director Environmental and Regulatory Compliance	Jessica Gregg (720) 838-5458 (c) jessica.gregg@carbonamerica.com
Director of Safety	Dave Hinz (303) 618-8908 david.hinz@carbonamerica.com
Program Manager and Engineer	Robert Godinez (832) 433-2159 (c) robert.godinez@carbonamerica.com
Eos Emergency Number	(720) 204-3736

7. Mutual Aid Agencies

El Paso County Sheriff's Office
(719) 520-7202 office or 911

Fountain Fire – Rescue – EMS
Ambulance Service
(719) 322-2000 office or 911

8. Staffing of Local and Mutual Aid Agencies

Hanover Fire Protection District – Station 1 is staffed by approximately 30 emergency responders. It provides fire protection to southeastern El Paso County. The station is equipped with an engine, tender, and brush truck. Mutual aid in the District is located at Stations 2 and 3 in Fountain.

Fountain Fire – Rescue – EMS provides ambulance and EMS support. It is based in Fountain.

The El Paso County Sheriff's Office provides law enforcement, public safety services, and mutual aid in El Paso County.

9. Description of Site Setting and Surrounding Area

The well location will be leased from the State Land Board, which owns the surface.

The well pad will be on rangeland, as shown in Attachment 1.

The surrounding area is arid. It consists of desert scrub, shortgrass prairie, and sandhills. Dominant vegetation is blue grama, prairie sandreed, purple threeawn, sand bluestem, sand dropseed, and sand sagebrush.

The nearest residence is over 2 miles northeast. There are no oil and gas wells in the area.

10. Detail Layout of the Locations

A detailed layout of the location during well drilling is shown in Attachment 2.

11. Detailed Description of the Equipment and Stored Materials

The stratigraphic well will require the major equipment and material listed below during well drilling. Equipment and material will be removed after drilling is complete. The equipment is shown on the representative Drill Rig Layout in Attachment 2.

- Drill rig
- Mud pumps
- Water and mud tanks
- Power generation
- Shaker and solids handling
- Office and housing trailers

After geologic study and testing, the well will remain inactive until Eos determines the geologic suitability of the location for permitting as a Class VI injection well for carbon dioxide. While inactive, the well pad will contain only a wellhead inside of livestock fencing, and the pad will be fenced with three-strand wire fencing. Revegetated areas not needed during production will return to prior land use as rangeland.

12. Sensitive Areas

The nearest residence is over 2 miles northeast.

The location does not fall within any wildlife habitat mapped by Colorado Parks & Wildlife as High Priority Habitat.

There are no immediately downgradient waterbodies.

13. Potential Impacts, Prevention, and Mitigation

Potential impacts include:

- Storm damage
- Lightening
- Fire or wildfire
- Materials spill or release
- Equipment failure
- Motor vehicle or on-site accident

Personnel will be on-site daily during well drilling and approximately once per week during well operation to conduct site inspections and maintenance. The frequency may be reduced to once per month.

Personnel will monitor the site for storm-related damages, equipment failure and maintenance needs, and accidental spills or releases.

During well drilling, tanks will be inside of secondary containment to prevent release of a spill to the environment. Other material used on the well pad will be properly containerized and stored to prevent exposure to elements and spills.

Site equipment will be maintained in good working condition and operated according to training and manufacturer specifications.

Locations will be kept weed-free to avoid ignition of vegetation with a vehicle catalytic converter.

Staff and vendors will be expected to limit speeds to avoid accidents.

14. Response Equipment, Instruments, Materials

Spill response material will be available to respond to small leaks or spills. This includes drip pans, a shovel, and absorbents. Small leaks or spills could be oil, lubricants, or incidental fuel leaks.

In the event of a larger incident, Eos will manage and oversee direct support from a third-party provider to respond to an unintentional release and any potential soil contamination.

15. Health and Safety Action Levels, Decontamination, Staging Areas

The drill foreman and support personnel will be on-site during well drilling. Their presence will provide continuous communication about site conditions and site safety. During operation, Eos will inspect the location approximately once per week, which may be reduced to once per month. Eos will observe the wellhead, site maintenance, soil stability, stormwater controls, and site security.

An operation and maintenance log will document health, safety, maintenance, and repair issues. The log will be used to record repairs, preventative maintenance scheduling, and incidents. This information will help to identify site conditions requiring attention.

In the event of an incident, the well pad can be used as a staging area. If an incident warrants leaving the well pad, a muster point will be the turnoff to the well pad access road and is shown on the location figure in Attachment 1.

16. Training Coordinated with Local Responders

In the event of an emergency requiring first responders, a unified command will be established between the Eos appointed representative on location and first responders. A command post will be established based on conditions present at the time of an incident. Site personnel will be trained on the types of incidents that may occur on-site and the appropriate response. Incidents include those listed below. Through this Plan, potential incidents are being coordinated with the local response agency for agency input.

- Injury from equipment operation
- Equipment failure causing injury
- Equipment failure causing fire
- Equipment failure causing pressure release
- Grassfire or wildfire
- Medical emergency
- Slips, trips, falls
- Insect stings and bites
- Weather-related incident
- Motor vehicle accident

Most accidents consist of minor injuries, such as cuts, scrapes, trips, and sprains. Most medical incidents typically involve cold or heat exposure, sunburn, and insect stings and bites. Vehicles operating at the site will carry general first aid supplies. On-site self-treatment is typically sufficient for an incident until personnel are able to leave the site and, if warranted, receive any additional follow-up treatment. Notification to the Director of Safety will occur within 24 hours for all health and safety incidents. Serious incidents may require a 911 response.

Personnel will be instructed that the nearest major medical facility is the UC Health Emergency Room in Fountain. It is approximately 30 miles from the location.

NEAREST MEDICAL FACILITY

UC Health 24-Hour Emergency Room
7890 Fountain Mesa Rd.
Fountain, CO 80817
(719) 390-2680

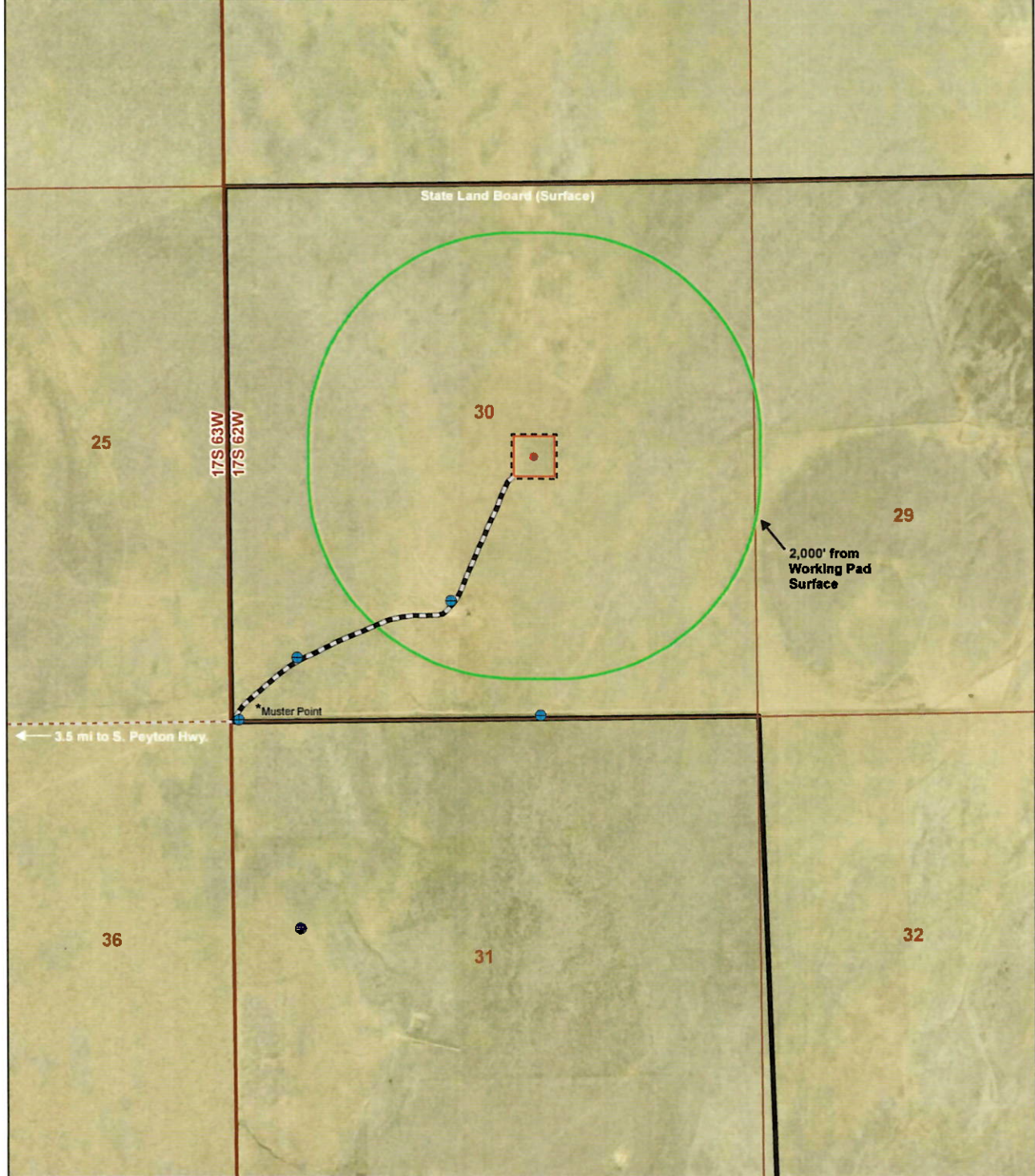
DIRECTIONS

W on State Land Board access for 3.5 miles
N on S. Peyton Hwy for 2 miles to intersection at Hanover Rd.
Continue N on S. Peyton Hwy. through the intersection for an additional 8 miles
W on Squirrel Creek Rd. for 11.5 miles
N on Link Rd. for 1 mile
W on C&S Rd. for 1 mile
R on Fountain Mesa Rd. for 0.75 mile
L at Advance Auto Parts and across the Walgreens parking lot to the Emergency Room entrance

Attachments

- Attachment 1 Location Drawing
- Attachment 2 Layout Drawing
- Attachment 3 Local Response Agency Coordination

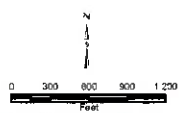
Attachment 1
Location Drawing



Aota Technical, LLC
Eos Sequestration, LLC
 Chico Basin Ranch West
 Stratigraphic Well
Location Drawing
 El Paso County, CO
 NW¼ SE¼, Sec. 30 T17S R62W

Legend	● Stratigraphic Well	□ Working Pad Surface
● Water Well	● Oil & Gas Location	□ 2,000' from Working Pad Surface
— Access Road	— Existing 2-Track	— Property Line

Improvements within 2,000' of Working Pad Surface	
Water Well (23002-F)	1.370' SW



Date: 8/30/23

Figure No: Figure 1

Data Source: BLMAC GIS Online

Attachment 2
Layout Drawing

Attachment 3

Local Response Agency Coordination

gwen.brodsky@aota.tech

From: gwen.brodsky@aota.tech
Sent: Thursday, October 5, 2023 2:50 PM
To: carl.tatum3500@gmail.com
Cc: Jessica Gregg; 'Robert Godinez'; david.hinz@carbonamerica.com
Subject: Eos Sequestration's Emergency Response Plan
Attachments: (8) Emergency Response Plan_Chico Basin Ranch West.pdf

Chief Tatum,

On behalf of Eos Sequestration, LLC, this email provides an Emergency Response Plan for Eos' planned *stratigraphic well* southeast of the Hanover area. The stratigraphic well is used to study subsurface geology. It will have no oil or gas production. Details about the well and its location, access, equipment, potential for hazards, and response material and procedures are in the attached. The Emergency Response Plan is a permit requirement under state rules administered by the Colorado Energy & Carbon Management Commission (ECMC). Eos will be applying for an ECMC permit for the location. Your response to this email will help to demonstrate Eos' coordination with the local emergency response agency.

Please don't hesitate to let me know if we can help with any questions. Also copied on this email from Eos' parent company, Carbon America, are:

Jessica Gregg, Director of Environmental and Regulatory Compliance

Dave Hinz, Director of Safety

Robert Godinez, Program Manager and Engineer

Many thanks,
Gwen

Gwen Brodsky | Principal
Cell (303) 818-4462
gwen.brodsky@aota.tech

Aota Technical, LLC | Denver, CO
www.aota.tech



Hanover Fire Protection District
13325 Old Pueblo Road
Fountain, CO 80817
(719) 382-1900



Job Description

FIRE CAPTAIN

JOB SUMMERY

Manages and leads activities of a fire suppression company during emergency and non-emergency operations. Maintains a state of constant readiness of assigned personnel and equipment. Given and assigned station and the districts that the station covers, oversees, and participates in station level tasks. Assists in station level planning, development, and administration.

This position reports to Fire Chief / Deputy Fire Chief, indirectly, operationally to the Volunteer Battalion Chiefs.

POSSIBLE WORKING TITLES

- Captain
- Fire Officer

ESSENTIAL DUTIES

This job description is not intended to be an exhaustive list of all duties, responsibilities, or qualifications associated with the job. Specific job assignments may include some or all the following:

- Managing and supervising firefighters that are assigned to you.
- Making decisions regarding firefighting methods to be used on Fire and EMS alarms.
- Prioritizing, scheduling, and completing tasks associated with non-emergency response activities.
- Motivating, supervising, training, and evaluating subordinate-level employees.
- Completing annual employee reviews of assigned personnel.
- Run Alarms: Fire, Emergency Medical, HAZMAT and Miscellaneous Response.
- Operate all Department Vehicles and Equipment.
- Attend volunteers' monthly meetings.
- Unless excused, all trainings and scheduled activities.
- Saturday drills with the Fire Department.
- Attend Required functions of Fire Department as directed.

- Maintenance activities on all department equipment and buildings.
- Log department activities, alarm, and other reports within ESO.
- Assist officers and firefighters with administrative activities as directed by the Department Chief.
- Attend meetings as assigned on behalf of the Fire Department.
- Assist in regional training.
- To conduct outreach training to schools or other organizations as requested. (ie Fire Prevention, Fire Drills, proper use of Fire Extinguishers.)
- May be deployed as needed for up to 21 days at a time for regional or national events.

If you do not meet all the desired qualifications listed above, there will be additional training required paid for by the department.

Uniform stipend falls within the Departments Standard Operating Procedures.

Adhere to the Fire Departments Bylaws and Standard Operating Procedures.

OTHER DUTIES

- Performs other duties as assigned

KNOWLEDGE/SKILLS AND ABILITIES

Knowledge of:

- The geography of the HFPD and surrounding areas, (or the ability to quickly learn this information), including the streets system, hydrant locations, the layout and location of public utilities and potentially hazardous materials or substances.
- Specialized fire fighting vehicles and equipment.
- Current strategies for all types of fire such as wildland, commercial, residential, airport, flammable and combustible liquids, vehicle, etc.
- Emergency Medical Technician (EMT) techniques and related medical equipment; Including I/V therapy.
- Basic mathematical and science skills.
- Basic knowledge of the Uniform Fire Code for inspection purposes.
- HFPD's Emergency response records systems, communications equipment and use, fire computer applications and incident reporting procedures.
- Computers and related software.

Skills and abilities:

- Make determinations as to the best course of action for fighting fires or responding to other related emergency situations.
- Implementing and/or integrating into an incident management system.

- Supervise personal and tactics in extremely stressful situations, day, and night, which result from a fire and other emergencies, including the responsibility for remaining calm and carrying out all duties with the recognition of the threat to life and property.
- Quickly learn and use new skills and knowledge brought about by rapidly changing information and/or technology.
 - a. Learn and correctly apply routine division and department policies and procedures
- Read, comprehend, and follow simple oral and written instructions; and to understand and apply available guidelines to varied operational requirements.
- Perform a wide variety of duties and responsibilities with accuracy and speed under the pressure of time-sensitive deadlines.
- Demonstrate integrity, ingenuity and inventiveness in the performance of assigned tasks.
- Operate a personal computer using program applications appropriate to assigned duties.
- Communicate effectively both orally and in writing, with the public and subordinates.

TYPICAL QUALIFICATIONS:

- Six years current, consecutive firefighting, or other sworn experience.
- Possess or the ability to obtain a valid Colorado driver's license.
- Knowledge of mobile Fire and EMS equipment with CEVO IV Fire and Ambulance or equivalent certification
- Have knowledge of the ICS system, have obtained a minimum ICS 700, 800, 100, 200.
- Current BTLs CPR Card or better
- State of Colorado EMT-Basic and or National Registry EMT-Basic or higher.
- IV Certified.
- NWCG FFT 1 task book open.
- Fire and EMS Instructor.
- State Proctor.
- Fire Officer 1 certification.

-Any equivalent combination of experience and training which provides the knowledge and abilities necessary to perform the work.

DESIRABLE QUALIFICATIONS

- Engine Boss.
- ICS 300 qualified

SUPERVISORY RESPONSIBILITIES

- Managing fire and EMS personal on the fire ground until Chief officer arrive on scene.
- Prioritizing, scheduling, and completing tasks associated with non-emergency response activities.
- Ensuring all equipment is properly maintained, service and open workorders when needed for repairs.
- Motivating, supervising, training, and evaluating subordinate-level employees.
- Completing the annual career firefighters' annual reviews.

ESSENTIAL PHYSICAL ABILITIES AND WORKING CONDITIONS

The primary duties of this class are performed in a work environment in which the employee is subject to potential personal danger. Therefore, the following physical abilities are deemed essential:

- Sufficient clarity of speech and hearing and other communication capabilities, with or without reasonable accommodation, in which permits the employee to communicate effectively, including during emergency situations which may involve a high degree of noise.
- Sufficient vision and other powers of observation, with or without reasonable accommodation, in which permits the employee to effectively operate at a fire or related emergency scene.
- Sufficient manual dexterity with or without reasonable accommodation, which permits the employee to operate equipment used in firefighting.
- Sufficient personal mobility and physical reflexes, with or without reasonable accommodation, in which permits the employee to perform all duties involved in protecting life and property.
- Exerting up to 50lbs of force occasionally, and/or up to 20lbs pounds of force frequently, and/or up to 10lbs pounds of force constantly to moving objects.
- Positions in this class typically requires climbing, balancing, stooping, kneeling, crouching, reaching, standing, walking, pushing, pulling, lifting, fingering, grasping, hearing, seeing, and repetitive motions.
- Incumbents may be subjected to moving mechanical parts, vibrations, fumes, odors, dusts, gasses, poor ventilation, chemicals, oils, extreme temperatures, workspace restrictions, and intense noises.

**Second Regular Session
Seventy-fourth General Assembly
STATE OF COLORADO**

REENGROSSED

*This Version Includes All Amendments
Adopted in the House of Introduction*

LLS NO. 24-0141.01 Jed Franklin x5484

HOUSE BILL 24-1104

HOUSE SPONSORSHIP

Snyder and Armagost, Amabile, Bird, Boesenecker, Bottoms, Bradley, Brown, Catlin, Clifford, Duran, English, Evans, Frizell, Froelich, Hamrick, Hartsook, Herod, Jodeh, Joseph, Kipp, Lieder, Lindsay, Lindstedt, Lukens, Marshall, Martinez, Marvin, Mauro, McCluskie, McCormick, McLachlan, Ortiz, Pugliese, Ricks, Sirota, Story, Taggart, Titone, Valdez, Velasco, Woodrow, Young

SENATE SPONSORSHIP

Exum,

House Committees
Judiciary

Senate Committees

A BILL FOR AN ACT

101 **CONCERNING PROTECTION OF FIREFIGHTERS' PERSONAL**
102 **INFORMATION FROM PUBLICATION ON THE INTERNET.**

Bill Summary

(Note: This summary applies to this bill as introduced and does not reflect any amendments that may be subsequently adopted. If this bill passes third reading in the house of introduction, a bill summary that applies to the reengrossed version of this bill will be available at <http://leg.colorado.gov>.)

The bill adds firefighters to the class of people whose personal information is protected from publication on the internet by public entities upon a firefighter's request.

1 *Be it enacted by the General Assembly of the State of Colorado:*

*Shading denotes HOUSE amendment. Double underlining denotes SENATE amendment.
Capital letters or bold & italic numbers indicate new material to be added to existing law.
Dashes through the words or numbers indicate deletions from existing law.*

HOUSE
3rd Reading Unamended
February 12, 2024

HOUSE
2nd Reading Unamended
February 9, 2024

1 **SECTION 1.** In Colorado Revised Statutes, 18-9-313, **amend**
2 (1)(n); and **add** (1)(c.5) as follows:

3 **18-9-313. Personal information on the internet - victims of**
4 **domestic violence, sexual assault, and stalking - other protected**
5 **persons - definitions.** (1) As used in this section, unless the context
6 otherwise requires:

7 (c.5) "FIREFIGHTER" HAS THE SAME MEANING AS SET FORTH IN
8 SECTION 18-3-201 (1.5).

9 (n) "Protected person" means an educator, a code enforcement
10 officer, a human services worker, a public health worker, a child
11 representative, a health-care worker, a reproductive health-care services
12 worker, an officer or agent of the state bureau of animal protection, an
13 animal control officer, an office of the respondent parents' counsel staff
14 member or contractor, a judge, a peace officer, a prosecutor, a public
15 defender, ~~or~~ a public safety worker, ~~OR~~ A FIREFIGHTER.

16 **SECTION 2. Act subject to petition - effective date.** This act
17 takes effect at 12:01 a.m. on the day following the expiration of the
18 ninety-day period after final adjournment of the general assembly; except
19 that, if a referendum petition is filed pursuant to section 1 (3) of article V
20 of the state constitution against this act or an item, section, or part of this
21 act within such period, then the act, item, section, or part will not take
22 effect unless approved by the people at the general election to be held in
23 November 2024 and, in such case, will take effect on the date of the
24 official declaration of the vote thereon by the governor.

Second Regular Session
Seventy-fourth General Assembly
STATE OF COLORADO

INTRODUCED

LLS NO. 24-0541.01 Nicole Myers x4326

HOUSE BILL 24-1168

HOUSE SPONSORSHIP

Froelich and Rutinel,

SENATE SPONSORSHIP

Hinrichsen,

House Committees
Transportation, Housing & Local Government

Senate Committees

A BILL FOR AN ACT

101 CONCERNING EQUAL ACCESS TO PUBLIC MEETINGS.

Bill Summary

(Note: This summary applies to this bill as introduced and does not reflect any amendments that may be subsequently adopted. If this bill passes third reading in the house of introduction, a bill summary that applies to the reengrossed version of this bill will be available at <http://leg.colorado.gov>.)

The bill requires state and local public bodies (public bodies) to ensure that the following accessibility requirements are implemented by July 1, 2025:

- Any public meeting at which public business is discussed, formal action may be taken, or recommendations to the governing body of the public body may be discussed (meeting) held by a public body is required to be accessible in real time by live streaming video or audio that is

Shading denotes HOUSE amendment. Double underlining denotes SENATE amendment.
Capital letters or bold & italic numbers indicate new material to be added to existing law.
Dashes through the words or numbers indicate deletions from existing law.

- recorded and accessible to individuals with disabilities;
- A public body is required to post on its website, at least 24 hours before a meeting, any documents that will be distributed during the meeting;
- For any meeting of a public body during which public testimony will be heard, the public body is required to allow any individual to participate in the meeting and offer public testimony by using a video conferencing platform unless the meeting occurs in a geographic location that lacks broadband internet service; and
- A public body is required to provide any auxiliary aids or services requested in time for the meeting for which they were requested. A public body may require that a request for auxiliary aids or services to attend a meeting of the public body with the use of the video conferencing platform be made up to 7 days before the date of the meeting.

Nothing in the bill prohibits a public body from promulgating rules for the administration of public testimony so long as the rules apply to both in-person and remote testimony, and nothing in the bill requires a public body to provide hardware or software or internet or phone access at an individual's home.

The failure of any public body to comply with the applicable requirements of the bill constitutes discrimination on the basis of disability. Any individual who is subjected to a violation is entitled to seek relief as currently provided in law.

1 *Be it enacted by the General Assembly of the State of Colorado:*

2 **SECTION 1. Legislative declaration.** (1) The general assembly
3 hereby finds and declares that:

4 (a) The federal "Americans with Disabilities Act of 1990" has
5 been law for over three decades;

6 (b) The federal "Americans with Disabilities Act of 1990"
7 mandates equal access to everyday activities for individuals with
8 disabilities;

9 (c) Many places of public business continue to be inaccessible to
10 individuals with disabilities; and

1 (d) It is the right of every individual to participate in public
2 discourse and it is imperative to a healthy and functional democracy that
3 all citizens have access to their government.

4 (2) The general assembly further finds and declares that it is
5 necessary to codify the right to accessible and transparent governance to
6 protect access and promote greater equity.

7 **SECTION 2.** In Colorado Revised Statutes, **add** part 17 to article
8 1 of title 29 as follows:

9 PART 17

10 ACCESSIBILITY OF LOCAL GOVERNMENT

11 **29-1-1701. Local public bodies - meetings - accessibility -**
12 **definitions.** (1) AS USED IN THIS PART 17, UNLESS THE CONTEXT
13 OTHERWISE REQUIRES:

14 (a) "AUXILIARY AIDS OR SERVICES" MEANS AN AID OR SERVICE
15 THAT IS USED TO PROVIDE INFORMATION TO AN INDIVIDUAL WITH A
16 COGNITIVE, DEVELOPMENTAL, INTELLECTUAL, NEUROLOGICAL, OR
17 PHYSICAL DISABILITY, AND IS AVAILABLE IN A FORMAT OR MANNER THAT
18 ALLOWS THE INDIVIDUAL TO BETTER UNDERSTAND THE INFORMATION.

19 (b) (I) "LOCAL PUBLIC BODY" MEANS ANY BOARD, COMMITTEE,
20 COMMISSION, AUTHORITY, OR OTHER ADVISORY, POLICY-MAKING,
21 RULE-MAKING, OR FORMALLY CONSTITUTED BODY OF ANY POLITICAL
22 SUBDIVISION OF THE STATE AND ANY PUBLIC OR PRIVATE ENTITY TO WHICH
23 A POLITICAL SUBDIVISION, OR AN OFFICIAL THEREOF, HAS DELEGATED A
24 GOVERNMENTAL DECISION-MAKING FUNCTION BUT DOES NOT INCLUDE
25 INDIVIDUALS ON THE ADMINISTRATIVE STAFF OF THE LOCAL PUBLIC BODY.

26 (II) NOTWITHSTANDING THE PROVISIONS OF SUBSECTION (1)(b)(I)
27 OF THIS SECTION, TO ASSURE SCHOOL BOARD TRANSPARENCY, "LOCAL

1 PUBLIC BODY" INCLUDES MEMBERS OF A BOARD OF EDUCATION, SCHOOL
2 ADMINISTRATION PERSONNEL, OR A COMBINATION THEREOF WHO ARE
3 INVOLVED IN A MEETING WITH A REPRESENTATIVE OF EMPLOYEES AT
4 WHICH A COLLECTIVE BARGAINING AGREEMENT IS DISCUSSED.

5 (III) NOTWITHSTANDING THE PROVISIONS OF SUBSECTION (1)(b)(I)
6 OF THIS SECTION, "LOCAL PUBLIC BODY" INCLUDES THE GOVERNING BOARD
7 OF AN INSTITUTE CHARTER SCHOOL THAT IS AUTHORIZED PURSUANT TO
8 PART 5 OF ARTICLE 30.5 OF TITLE 22.

9 (c) "PUBLIC MEETING" MEANS ANY MEETING HELD BY A LOCAL
10 PUBLIC BODY AT WHICH PUBLIC BUSINESS IS DISCUSSED, FORMAL ACTION
11 MAY BE TAKEN, OR RECOMMENDATIONS THAT MAY BE MADE TO THE
12 GOVERNING BODY OF A LOCAL PUBLIC BODY MAY BE DISCUSSED.

13 (2) EACH LOCAL PUBLIC BODY SHALL ENSURE THAT THE
14 ACCESSIBILITY REQUIREMENTS SPECIFIED IN THIS PART 17 ARE
15 IMPLEMENTED BY JULY 1, 2025, TO ENSURE THE FULL AND EQUAL
16 ENJOYMENT OF THE LOCAL PUBLIC BODY BY INDIVIDUALS IN PROTECTED
17 CLASSES, INCLUDING INDIVIDUALS WITH DISABILITIES, AS REQUIRED BY
18 SECTIONS 24-34-601 AND 24-34-802.

19 (3) (a) ANY PUBLIC MEETING MUST BE ACCESSIBLE IN REAL TIME
20 BY LIVE STREAMING VIDEO OR AUDIO THAT IS RECORDED AND ACCESSIBLE
21 TO INDIVIDUALS WITH DISABILITIES.

22 (b) A LOCAL PUBLIC BODY MUST POST ON ITS WEBSITE ANY
23 DOCUMENTS THAT WILL BE DISTRIBUTED OR DISCUSSED DURING A PUBLIC
24 MEETING. A LOCAL PUBLIC BODY MUST POST SUCH DOCUMENTS AT LEAST
25 TWENTY-FOUR HOURS BEFORE THE PUBLIC MEETING OR, IF POSTING THE
26 DOCUMENTS TWENTY-FOUR HOURS BEFORE THE PUBLIC MEETING IS NOT
27 POSSIBLE, AS SOON AS PRACTICABLE BEFORE THE PUBLIC MEETING; EXCEPT

1 THAT, IF THE DOCUMENTS ARE CONFIDENTIAL OR PRIVILEGED, NOT
2 AVAILABLE TO THE PUBLIC UNTIL DISTRIBUTED OR DISCUSSED, OR NOT IN
3 THE LOCAL PUBLIC BODY'S POSSESSION BEFORE THE MEETING, A LOCAL
4 PUBLIC BODY MUST POST THE DOCUMENTS IN REAL TIME DURING THE
5 PUBLIC MEETING. ANY DOCUMENTS THAT A LOCAL PUBLIC BODY POSTS
6 PURSUANT TO THIS SUBSECTION (3)(b) MUST MEET CURRENT PREVAILING
7 DOCUMENT AND INTERNET ACCESSIBILITY STANDARDS AND MUST REMAIN
8 AVAILABLE TO THE PUBLIC ON THE LOCAL PUBLIC BODY'S WEBSITE FOR
9 ON-DEMAND USE IN THE SAME MANNER IN WHICH THE LOCAL PUBLIC BODY
10 MAKES THE WRITTEN RECORD OF THE MEETING AVAILABLE TO THE PUBLIC.

11 (c) A LOCAL PUBLIC BODY MAY, IN ITS DISCRETION, MAKE THE
12 VIDEO OR AUDIO RECORDING OF ANY PUBLIC MEETING AVAILABLE TO THE
13 PUBLIC FOR ON-DEMAND USE.

14 (4) (a) EXCEPT AS OTHERWISE PROVIDED IN SUBSECTION (4)(b) OF
15 THIS SECTION, FOR ANY PUBLIC MEETING DURING WHICH THE LOCAL
16 PUBLIC BODY WILL HEAR PUBLIC TESTIMONY, THE LOCAL PUBLIC BODY
17 MUST ALLOW ANY INDIVIDUAL TO PARTICIPATE IN THE PUBLIC MEETING
18 AND OFFER PUBLIC TESTIMONY BY USING A VIDEO CONFERENCING
19 PLATFORM. THE LOCAL PUBLIC BODY MUST ENSURE THAT ANY INDIVIDUAL
20 SEEKING THE USE OF A VIDEO CONFERENCING PLATFORM TO PARTICIPATE
21 IN THE PUBLIC MEETING IS PROVIDED ACCESS TO THE PUBLIC MEETING BY
22 USE OF THE VIDEO CONFERENCING PLATFORM AT THE SAME TIMES AND
23 UPON THE SAME TERMS AS INDIVIDUALS WHO APPEAR AT THE PUBLIC
24 MEETING IN PERSON. IT IS IN A LOCAL PUBLIC BODY'S DISCRETION TO
25 DETERMINE WHICH VIDEO CONFERENCING PLATFORM WILL BE USED FOR
26 SUCH PARTICIPATION SO LONG AS THE PLATFORM IS ACCESSIBLE TO
27 INDIVIDUALS WITH DISABILITIES.

Second Regular Session
Seventy-fourth General Assembly
STATE OF COLORADO

INTRODUCED

LLS NO. 24-0939.01 Rebecca Bayetti x4348

HOUSE BILL 24-1302

HOUSE SPONSORSHIP

Parenti,

SENATE SPONSORSHIP

(None),

House Committees
Transportation, Housing & Local Government

Senate Committees

A BILL FOR AN ACT

101 CONCERNING INFORMATION TO REAL PROPERTY OWNERS REGARDING
102 PROPERTY TAXES.

Bill Summary

(Note: This summary applies to this bill as introduced and does not reflect any amendments that may be subsequently adopted. If this bill passes third reading in the house of introduction, a bill summary that applies to the reengrossed version of this bill will be available at <http://leg.colorado.gov>.)

Section 1 of the bill requires taxing authorities to submit, with their annual certification of levies, the following information:

- The rate of each levy that it imposes;
- Any adjustments from the prior year's levies;
- Whether the levy is fixed or floating;
- The applicable statutory or constitutional limits on annual

Shading denotes HOUSE amendment. Double underlining denotes SENATE amendment.
Capital letters or bold & italic numbers indicate new material to be added to existing law.
Dashes through the words or numbers indicate deletions from existing law.

levy or revenue increases, and whether the taxing authority is exempt from or has waived these statutory or constitutional limits;

- The annual rate of growth of the levy; and
- The mechanism for determining the annual rate of growth of the levy.

The board of county commissioners or other body authorized by law to levy taxes must provide this information, along with the identity of the entity that fixes each levy rate, with its annual certification of levies. The counties are required to ensure that this information is publicly available.

Section 2 removes the requirement that an annual notice of valuation sent to a property owner by a county assessor contain an estimate or an estimated range of the taxes owed for the current property tax year.

1 *Be it enacted by the General Assembly of the State of Colorado:*

2 **SECTION 1.** In Colorado Revised Statutes, **add** 39-1-125 as
3 follows:

4 **39-1-125. Tax and levy rate information publicly available.**

5 (1)(a) WHEN EACH TAXING AUTHORITY CERTIFIES ITS LEVY PURSUANT TO
6 SECTION 39-5-128, IT SHALL ALSO PROVIDE THE FOLLOWING
7 INFORMATION:

8 (I) THE RATE OF EACH LEVY THAT IT IMPOSES;

9 (II) ANY ADJUSTMENTS FROM THE PRIOR YEAR'S LEVIES;

10 (III) WHETHER THE LEVY IS FIXED OR FLOATING;

11 (IV) THE APPLICABLE STATUTORY OR CONSTITUTIONAL LIMITS ON
12 ANNUAL LEVY OR REVENUE INCREASES, AND WHETHER THE TAXING
13 AUTHORITY IS EXEMPT FROM OR HAS WAIVED ANY SUCH STATUTORY OR
14 CONSTITUTIONAL LIMITS;

15 (V) THE ANNUAL RATE OF GROWTH OF THE LEVY; AND

16 (VI) THE MECHANISM FOR DETERMINING THE ANNUAL RATE OF
17 GROWTH OF THE LEVY.

1 (b) ON OR BEFORE SEPTEMBER 1, 2024, THE DEPARTMENT OF
2 LOCAL AFFAIRS SHALL DETERMINE THE PROCESS BY WHICH TAXING
3 AUTHORITIES WILL PROVIDE THE INFORMATION LISTED IN SUBSECTION
4 (1)(a) OF THIS SECTION.

5 (c) THE BOARD OF COUNTY COMMISSIONERS OR OTHER BODY
6 AUTHORIZED BY LAW TO LEVY TAXES SHALL PROVIDE THE INFORMATION
7 LISTED IN SUBSECTION (1)(a) OF THIS SECTION, IN ADDITION TO THE
8 IDENTITY OF THE ENTITY THAT FIXES EACH LEVY RATE, ALONG WITH ITS
9 CERTIFICATION OF LEVIES PURSUANT TO SECTION 39-1-111.

10 (2) (a) UPON RECEIVING THE CERTIFICATION OF LEVIES FROM THE
11 BOARD OF COUNTY COMMISSIONERS OR OTHER BODY AUTHORIZED BY LAW
12 TO LEVY TAXES, OR BY EITHER GROUP'S AUTHORIZED PARTY, IN
13 ACCORDANCE WITH SECTION 39-1-111, COUNTIES SHALL, IN
14 COORDINATION WITH THE PROPERTY TAX ADMINISTRATOR, ENSURE THAT
15 THE INFORMATION LISTED IN SUBSECTION (1)(a) OF THIS SECTION IS
16 PUBLICLY AVAILABLE AND ACCESSIBLE TO PERSONS THAT OWN TAXABLE
17 REAL PROPERTY WITHIN THE TAXING AUTHORITY'S TERRITORIAL LIMITS.

18 (b) COUNTIES SHALL ENSURE THAT THE INFORMATION IN
19 SUBSECTION (1)(a) OF THIS SECTION IS PUBLICLY AVAILABLE BEGINNING
20 ON JANUARY 1, 2026. FROM DECEMBER 31, 2024, THROUGH DECEMBER
21 31, 2025, COUNTIES SHALL ENSURE THAT THE INFORMATION IN
22 SUBSECTION (1)(a) OF THIS SECTION IS AVAILABLE UPON REQUEST.

23 **SECTION 2.** In Colorado Revised Statutes, 39-5-121, **amend**
24 (1)(a)(I) as follows:

25 **39-5-121. Notice of valuation - legislative declaration -**
26 **definition - repeal.** (1) (a) (I) No later than May 1 in each year, the
27 assessor shall mail to each person who owns land or improvements a

1 notice setting forth the valuation of such land or improvements. For
2 agricultural property, the notice must separately state the actual value of
3 such land or improvements in the previous year, the actual value in the
4 current year, and the amount of any adjustment in actual value. For all
5 other property, the notice must state the total actual value of such land
6 and improvements together in the previous year, the total actual value in
7 the current year, and the amount of any adjustment in total actual value.
8 The notice must not state the valuation for assessment of such land or
9 improvements or combination of land and improvements. Based upon the
10 classification of such taxable property, the notice must also set forth the
11 appropriate ratio of valuation for assessment to be applied to said actual
12 value prior to the calculation of property taxes for the current year and
13 that any change or adjustment of the ratio of valuation for assessment
14 must not constitute grounds for the protest or abatement of taxes. ~~The~~
15 ~~assessor shall include in the notice an estimate of the taxes, or an~~
16 ~~estimated range of the taxes, owed for the current property tax year. The~~
17 ~~notice must clearly state that the tax amount is merely an estimate based~~
18 ~~upon the best available information.~~ The notice must state, in bold-faced
19 type, that the taxpayer has the right to protest any adjustment in valuation,
20 ~~but not the estimate of taxes if such an estimate is included in the notice,~~
21 the classification of the property that determines the assessment
22 percentage to be applied, and the dates and places at which the assessor
23 will hear such protest. The notice must also set forth the following: That,
24 to preserve the taxpayer's right to protest, the taxpayer shall notify the
25 assessor either in writing or in person of the taxpayer's objection and
26 protest; that such notice must be delivered, postmarked, or given in
27 person no later than June 8; and that, after such date, the taxpayer's right

1 to object and protest the adjustment in valuation is lost. The notice must
2 be mailed together with a form that, if completed by the taxpayer, allows
3 the taxpayer to explain the basis for the taxpayer's valuation of the
4 property. Such form may be completed by the taxpayer to initiate an
5 appeal of the assessor's valuation. However, in accordance with section
6 39-5-122 (2), completion of this form does not constitute the exclusive
7 means of appealing the assessor's valuation. For the years that intervene
8 between changes in the level of value, if the difference between the actual
9 value of such land or improvements in the previous year and the actual
10 value of such land or improvements in the intervening year as set forth in
11 such notice constitutes an increase in actual value of more than
12 seventy-five percent, the assessor shall mail together with the notice an
13 explanation of the reasons for such increase in actual value.

14 **SECTION 3. Applicability.** This act applies to notices of
15 valuation sent and information sent with certifications of levies completed
16 on or after the effective date of this act.

17 **SECTION 4. Safety clause.** The general assembly finds,
18 determines, and declares that this act is necessary for the immediate
19 preservation of the public peace, health, or safety or for appropriations for
20 the support and maintenance of the departments of the state and state
21 institutions.

Second Regular Session
Seventy-fourth General Assembly
STATE OF COLORADO

INTRODUCED

LLS NO. 24-0956.01 Jed Franklin x5484

SENATE BILL 24-144

SENATE SPONSORSHIP

Baisley and Van Winkle,

HOUSE SPONSORSHIP

(None),

Senate Committees
Finance

House Committees

A BILL FOR AN ACT

101 CONCERNING A LIMIT ON THE PERCENTAGE BY WHICH THE ACTUAL
102 VALUE OF MOST CLASSES OF REAL PROPERTY MAY INCREASE.

Bill Summary

(Note: This summary applies to this bill as introduced and does not reflect any amendments that may be subsequently adopted. If this bill passes third reading in the house of introduction, a bill summary that applies to the reengrossed version of this bill will be available at <http://leg.colorado.gov>.)

The bill ensures that the calculation of the actual value of certain real property used for the purpose of establishing a base valuation for valuation for assessment for the 2025 property reassessment cycle but not for the purpose of determining property tax liability for the 2021 and 2023 property tax reassessment cycles does not increase by more than 6% from 2020 levels in the 2021 reassessment cycle and more than 6% from

Shading denotes HOUSE amendment. Double underlining denotes SENATE amendment.
Capital letters or bold & italic numbers indicate new material to be added to existing law.
Dashes through the words or numbers indicate deletions from existing law.

2021 levels in the 2023 reassessment cycle. The actual value for the 2025 reassessment cycle may not increase by more than 6% over the 2023 levels. After the 2025 reassessment cycle, property values may increase no more than 6% from the preceding assessment cycle during every reassessment cycle thereafter, for certain real property that does not have an unusual condition that results in an increase in actual value.

1 *Be it enacted by the General Assembly of the State of Colorado:*

2 **SECTION 1.** In Colorado Revised Statutes, 39-1-103, **add** (19)
3 as follows:

4 **39-1-103. Actual value determined - when - legislative**
5 **declaration - definitions.** (19) (a) AS USED IN THIS SUBSECTION (19),
6 UNLESS THE CONTEXT OTHERWISE REQUIRES:

7 (I) "PROPERTY" MEANS REAL PROPERTY EXCLUSIVE OF PRODUCING
8 MINES AND NONPRODUCING MINING CLAIMS, LEASEHOLDS AND LANDS
9 PRODUCING OIL OR GAS, THE OPERATING PROPERTY AND PLANTS OF ALL
10 PUBLIC UTILITIES DOING BUSINESS IN THE STATE, AND MOBILE HOMES.

11 (II) "UNUSUAL CONDITION" MEANS AN ON-SITE IMPROVEMENT,
12 THE ENDING OF THE ECONOMIC LIFE OF AN IMPROVEMENT WITH ONLY
13 SALVAGE VALUE REMAINING, THE ADDITION TO OR REMODELING OF A
14 STRUCTURE, A CHANGE OF USE OF LAND, THE CREATION OF A
15 CONDOMINIUM OWNERSHIP OF REAL PROPERTY AS RECOGNIZED IN THE
16 "CONDOMINIUM OWNERSHIP ACT", ARTICLE 33 OF TITLE 38, A NEW STATE
17 LAW OR RULE OR LOCAL GOVERNMENT ORDINANCE OR RESOLUTION
18 RESTRICTING OR INCREASING THE USE OF THE LAND, THE INSTALLATION
19 AND OPERATION OF SURFACE EQUIPMENT RELATING TO OIL AND GAS WELLS
20 ON AGRICULTURAL LAND, A DETRIMENTAL ACT OF NATURE, AND DAMAGE
21 DUE TO AN ACCIDENT, VANDALISM, FIRE, OR EXPLOSION. THE CREATION OF
22 A CONDOMINIUM OWNERSHIP OF REAL PROPERTY BY THE CONVERSION OF

1 AN EXISTING STRUCTURE IS CONSIDERED AN UNUSUAL CONDITION FOR
2 PURPOSES OF THIS SUBSECTION (19) WHEN AT LEAST FIFTY-ONE PERCENT
3 OF THE CONDOMINIUM UNITS, AS DEFINED IN SECTION 38-33-103 (1), IN A
4 MULTIUNIT PROPERTY SUBJECT TO CONDOMINIUM OWNERSHIP HAVE BEEN
5 SOLD AND CONVEYED TO BONA FIDE PURCHASERS AND DEEDS HAVE BEEN
6 RECORDED FOR THOSE UNITS.

7 (b)(I) NOTWITHSTANDING ANY OTHER LAW, FOR PURPOSES OF THIS
8 SUBSECTION (19)(b)(I) AND NOT FOR PURPOSES OF DETERMINING
9 PROPERTY TAX LIABILITY FOR THE 2021 AND 2023 PROPERTY TAX
10 REASSESSMENT CYCLES:

11 (A) FOR THE 2021 REASSESSMENT CYCLE, THE ACTUAL VALUE OF
12 A PROPERTY IS CALCULATED AS IF IT COULD NOT EXCEED ONE HUNDRED
13 SIX PERCENT OF THE ACTUAL VALUE, AS DETERMINED IN ACCORDANCE
14 WITH SECTION 3 OF ARTICLE X OF THE STATE CONSTITUTION, OF THE SAME
15 PROPERTY FOR THE 2020 PROPERTY TAX YEAR; AND

16 (B) FOR THE 2023 REASSESSMENT CYCLE, THE ACTUAL VALUE OF
17 A PROPERTY IS CALCULATED AS IF IT COULD NOT EXCEED ONE HUNDRED
18 SIX PERCENT OF THE AMOUNT CALCULATED PURSUANT TO SUBSECTION
19 (19)(b)(I)(A) OF THIS SECTION.

20 (II) NOTWITHSTANDING ANY OTHER LAW, FOR THE 2025
21 REASSESSMENT CYCLE, THE ACTUAL VALUE OF A PROPERTY SHALL NOT
22 EXCEED ONE HUNDRED SIX PERCENT OF THE ACTUAL VALUE DETERMINED
23 PURSUANT TO SUBSECTION (19)(b)(I)(B) OF THIS SECTION. FOR EVERY
24 REASSESSMENT CYCLE AFTER 2025, THE ACTUAL VALUE OF A PROPERTY
25 SHALL NOT EXCEED ONE HUNDRED SIX PERCENT OF THE ACTUAL VALUE,
26 AS DETERMINED IN ACCORDANCE WITH SECTION 3 OF ARTICLE X OF THE
27 STATE CONSTITUTION, OF THE SAME PROPERTY FOR THE PRECEDING CYCLE.

1 (c) SUBSECTION (19)(b) OF THIS SECTION DOES NOT APPLY TO A
2 PROPERTY THAT HAS AN UNUSUAL CONDITION THAT RESULTS IN AN
3 INCREASE IN ACTUAL VALUE.

4 **SECTION 2. Act subject to petition - effective date.** This act
5 takes effect at 12:01 a.m. on the day following the expiration of the
6 ninety-day period after final adjournment of the general assembly; except
7 that, if a referendum petition is filed pursuant to section 1 (3) of article V
8 of the state constitution against this act or an item, section, or part of this
9 act within such period, then the act, item, section, or part will not take
10 effect unless approved by the people at the general election to be held in
11 November 2024 and, in such case, will take effect on the date of the
12 official declaration of the vote thereon by the governor.



Opportunity

As the Coordinator of the Junior Firefighter Program, I would like to take this opportunity to welcome you. For many, this program will be the first step in the career of the fire service, whether volunteer or paid.

As a new member of the Junior Program, you will be required to participate in trainings, meetings, fundraising events and station projects.

As a member of this department I take a great deal of pride in it and the community that surrounds it. You will be expected to do the same. As a member, strive for excellence; be the best that you can; be proud of what you are doing it for; and most of all have fun and be safe. Again from myself, the Chief, and the entire department we welcome you.

Captain John Cole

Junior Meetings and Trainings
Junior Firefighter Trainings are held on the 2nd Saturday of every month from 9:00 am-12:00 pm. In your first year on the department you will receive training in Incident Command System (ICS), Basic Firefighting and first aid.

Department Training
As a Junior Member you are also encouraged to attend regular member trainings on Tuesday evenings from 7:00pm-9:00pm working hand in hand with our members and completing station duties.

Monthly Department Meetings

- 1st Tuesday-Business Meeting
- 3rd Tuesday—Medical In Service Training
- 4th Tuesday - Fire Training
- 5th Tuesday— Fire Training

Fundraising and Outreach
Junior Members will also be required to attend our monthly fundraising breakfast held on the 2nd Sunday of every month and assist in community outreach and fire prevention as needed.

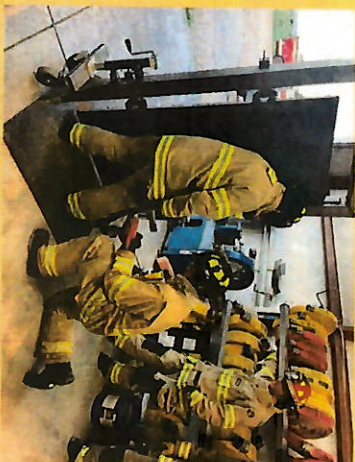
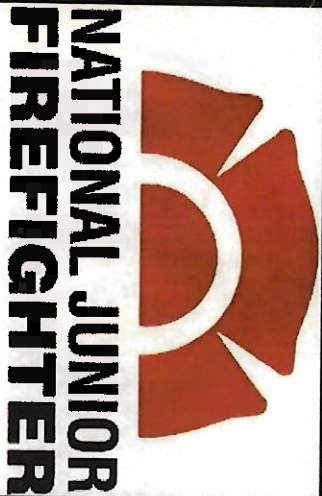


The Junior Firefighter Program will allow you to learn valuable skills in the Fire and Emergency Services Field, working hand in hand with members of the Hanover Fire Department.



National Junior Firefighter Program

The National Volunteer Fire Council's (NVFC) National Junior Firefighter Program supports fire and emergency service departments by fostering relationships and engaging youth in learning about, and ultimately becoming, members of the emergency services



Hanover Fire Department
Station 2
13325 Old Pueblo Rd
Fountain, Colorado
80817

Junior Firefighter Program



Captain John Cole
Outreach and Prevention
Tel: 719-648-0420
Hazmatcole4005@gmail.com